

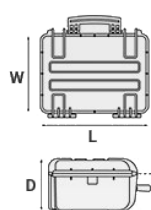
Mod. 10840.G D1

COPOLYMER POLYPROPYLENE WATERPROOF CASE

Mobile armoury case for rifles. Self-oiling free running wheels. Removable lid. 12 heavy duty metal latches.



METRIC MM-KG-C°



INTERNAL DIMENSIONS

L LENGTH	1080 mm
W WIDTH	620 mm
D DEPTH	400 mm
LID	200 mm
BASE	200 mm

EXTERNAL DIMENSIONS

L LENGTH	1178 mm
W WIDTH	718 mm
D DEPTH	427 mm

OTHER DATA

WEIGHT EMPTY	19.80 Kg
WEIGHT WITH FOAM	26.30 Kg
WEIGHT WITH CUSTOM FOAM	25 Kg
VOLUME	260 lt
BUOYANCY	120.60 Kg/max
OPERATING TEMPERATURE	°C min -33 / max +90

IMPERIAL IN-LBS-F°



INTERNAL DIMENSIONS

L LENGTH	42 1/2 in
W WIDTH	24 7/16 in
D DEPTH	15 3/4 in
LID	7 7/8 in
BASE	7 7/8 in

EXTERNAL DIMENSIONS

L LENGTH	46 3/8 in
W WIDTH	28 1/4 in
D DEPTH	16 13/16 in

OTHER DATA

WEIGHT EMPTY	43.65 lbs
WEIGHT WITH FOAM	57.32 lbs
WEIGHT WITH CUSTOM FOAM	55.11 lbs
VOLUME	68.68 gal
BUOYANCY	265.87 lbs/max
OPERATING TEMPERATURE	°F min -27.4 / max +194

FEATURES



AUTOMATIC VALVE

Automatic pressure release valve.



4 SELF-OILING FREE RUNNING WHEELS (model 10840)



JAM FREE LATCHES WITH EASY-OPENING MECHANISM

(from model 3818 on)



LOCKABLE METAL BAR TO SECURE THE WEAPONS



SEALING O-RING

(Art. NEOSEAL + nr. art.)



PVC WATERPROOF I. D. REMOVABLE LABEL

(Art. LABELCOVER + nr. art.)



TWO MAN LIFT SIDE HANDLES



STAINLESS STEEL REINFORCED PADLOCKABLE POINTS

4 stainless steel clip-covers on the two frontal outer padlock points, to grant a better resistance to abrasion.



HEAVY DUTY METAL LATCHES

8 heavy duty metal latches, 4 on each longer side, grant a more reliable retaining during rough handling.

ACCESSORIES



PROTECTIVE SLEEVE FOR PC 15"-15.6"

TOP ENVELOPE 15

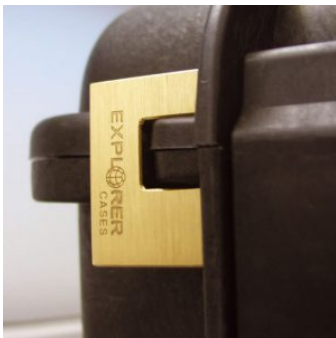
Protective padded notebook sleeve. Protects the laptop from shocks and scratches.



PROTECTIVE SLEEVE FOR PC 13"-13.3"

TOP ENVELOPE 13

Protective padded notebook sleeve. Protects the laptop from shocks and scratches.



PATENTED HEAVY DUTY BRASS PADLOCK WITH KEYS

EXPL PADLOCK

Designed to fit snug to the Explorer case mould so as not to swing out



METAL BRACKET FOR WALL HANGING OF CASE 10840-10826

EX.METALPLATE

Metal bracket (Art. EX.METALPLATE 1 pc) to secure the whole case or the single shell to the wall in order to create a permanent or mobile armoury. Can also be used in special vehicles configurations or deployed in the field. The case (or both open shells separately) is hanged to the metal bracket by mean of its upper external handle, therefore easy to be applied and removed. The metal bracket has been studied to be fixed with a padlock to the case handle to avoid accidental releases or thefts (padlock not included).



DIGITAL LOCK FOR CASES 9413, 9433, 11413, 13513, 13527, 15416, 10826 AND 10840

KIT.DL

Kit includes 2 pcs.



PATENTED COMBINATION PADLOCK

EXPL COMBILOCK

Designed to fit snug to the Explorer case mould so as not to swing out



TSA APPROVED PADLOCK WITH COMBINATION

EXPL TSA.DIGILOCK

The new TSA approved padlocks allow tsa® airport security agents to open the case without destroying the lock. TSA agents are trained to recognize the travel sentry certified logo and should not break the case lock.



FOAM SET FOR CASE 10840

FOAM.10840

Layers of pre cubed foam for the bottom and the lid. Available for 10840 model. Color: dark grey.

[DOWNLOAD PDF](#)



ALVEOLAR COVER PALLET WITH STRAPS FOR CASE 10840

PANDIV.10840

Designed to hold the lid foam content steady in place. The kit includes: 1 alveolar polypropylene sheet, 4 adjustable velcro straps, 8 metal loops and fixing hardware



PADDED GUN BAG FOR CASES 10826-10840

GBAG 108

Padded gunbag to protect long guns. Inclusive of a number of features to secure rifles and shotguns together with necessary accessories and ammunitions. GBAG 108 is designed to perfectly fit into Explorer Cases models 10826 and 10840 (up to 4/6 pieces). The gunbag is built with durable, 600D tear resistant polyester and robust zipper with lockable Velcro pull zipper for the main compartment. The main compartment features two neoprene hook-and-loop side flaps and adjustable straps to secure firearms. The front central compartment is equipped with adjustable interior straps to secure rifle position. The two side smaller pouches are designed to storage accessories and ammunitions. Both the main and front compartments are padded on all sides to protect and transport critical gear. This long gun bag features top and bottom compression straps and come with a removable shoulder strap. Personal ID window on the backside and front removable hook-and-loop screen-printable band. The gunbag can easily become a backpack by fixing the BACKPACK KIT in its rear side (see BACKPACK KIT accessory in BACKPACK SYSTEMS section for more details).

SPARE PARTS



Metal bar kit, 1 unit - for mod. 10826-10840

KIN.1037

Includes: 1 metal bar 1 metal lock plate 1 bi-adhesive foam strip 10 screws



Metal bars kit, 2 units – for mod. 10840

KIN.0898

Includes: 2 metal bars 2 metal lock plates 12+8 screws



Metal clips for mod.

3005-4209-16-4412-19-4820-5140-5218-21-5325-26-5822-23-33-762

6-30-35-41-7726-45-7814-9413-33-10826-40-11413-13513-27-15416

KIN.1214

Includes: 4 metal reinforcements



Rubber coated handle for models 7626-7635-9433

KIN.1371

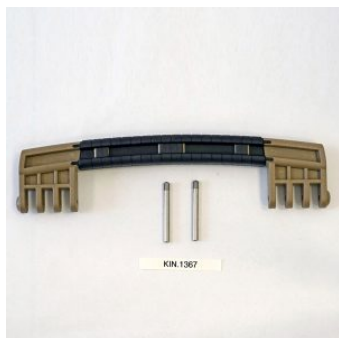
Includes: 1 orange handle 2 fixing pins



Rubber coated handle for models 7626-7635-9433

KIN.1369

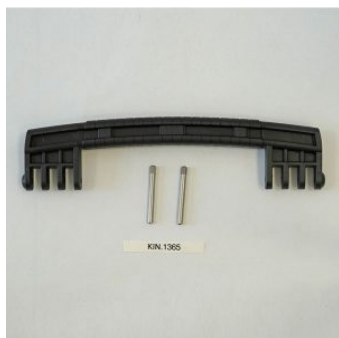
Includes: 1 military green handle 2 fixing pins



Rubber coated handle for models 7626-7635-9433

KIN.1367

Includes: 1 desert tan handle 2 fixing pins



Rubber coated handle for models 7626-7635-9433

KIN.1365

Includes: 1 black handle 2 fixing pins



Transparent PC name tag for mod.

4209-4216-4412-4419-4820-5218-5221-5325-5326-5822-5823-5833-7626-7630-7635-7641-7726-7745-7814-9413-9433-10826-10840-11413-13513-13527-15416-MUB65

KIN.0969

Includes: 1 transparent name tag holder



Handle (mod. 9413 front handle - mod. 10826-10840 lateral short handle)

KIN.0416

Includes: 1 military green handle 2 fixing pins



Handle for mod.

7630-7726-7745-11413-13513-13527-15416-10826-10840-MUB78

KIN.0425

Includes: 1 black handle 2 fixing pins



Handle for mod.

7630-7726-7745-11413-13513-13527-15416-10826-10840-MUB78

KIN.0881

Includes: 1 sand handle 2 fixing pins



Easy-opening side latch for models 7630, 7641 and 10840

KIN.0432

Includes:

1 military green latch

1 fixing pin



Easy-opening side latch for models 7630, 7641 and 10840

KIN.0433

Includes:
1 black latch
1 fixing pin



Easy-opening latch for models from 3818 up

KIN.0446

Includes:
1 black latch
1 fixing pin



Easy-opening latch for models from 3818 up

KIN.0435

Includes:
1 military green latch
1 fixing pin



Handle (mod. 9413 front handle - mod. 10826-10840 lateral short handle)

KIN.0417

Includes: 1 black handle 2 fixing pins



Wheels for mod. 10826-10840

KIN.0520

Includes: 4 self-oiling wheels 2 snap rings (Seeger) 2 fixing pins



Handle for models

7630-7726-7745-11413-13513-13527-10826-10840-15416-MUB78

KIN.0424

Includes: 1 military green handle 2 fixing pins



Polyurethane o-ring seal for mod. 10826-10840

KIN.0857

Includes: 1 o-ring



Frontal metal butterfly latch for models 10826 and 10840 (long side)

KIN.0947

Includes: 1 bottom support with integrated butterfly latch 1 lid support hook for butterfly latch 4 fixing pins 2 rivets



Handle for models

7630-7726-7745-11413-13513-13527-10826-10840-15416-MUB78

KIN.0423

Includes: 1 orange handle 2 fixing pins