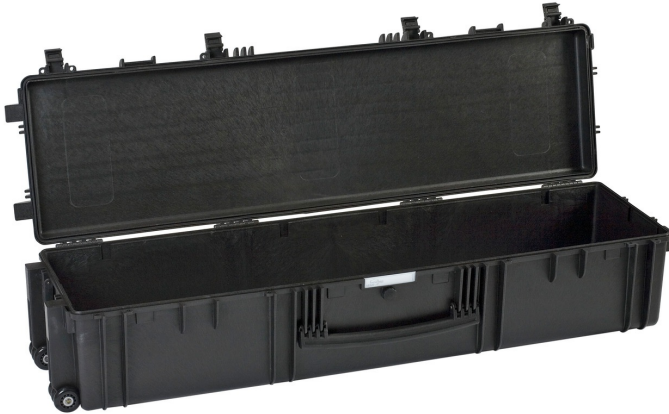
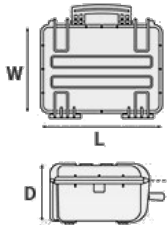


Mod. 13527 BE

COPOLYMER POLYPROPYLENE WATERPROOF CASE



Metric mm-Kg-C°



INTERNAL DIMENSIONS

L Length	1350 mm
W Width	350 mm
D Depth	272 mm
Lid	42 mm
Base	230 mm

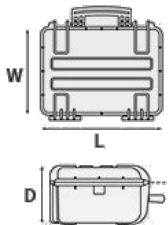
EXTERNAL DIMENSIONS

L Length	1430 mm
W Width	415 mm
D Depth	296 mm

OTHER DATA

Weight empty	11.70 Kg
Weight with foam	14.90 Kg
Weight with custom foam	0 Kg
Volume	128.50 lt
Buoyancy	97.50 Kg/max
Operating temperature	°C min -33 / max +90

Imperial in-lbs-F°



INTERNAL DIMENSIONS

L Length	53 1/8 in
W Width	13 3/4 in
D Depth	10 11/16 in
Lid	1 5/8 in
Base	9 1/16 in

EXTERNAL DIMENSIONS

L Length	56 5/16 in
W Width	16 5/16 in
D Depth	11 5/8 in

OTHER DATA

Weight empty	25.79 lbs
Weight with foam	32.84 lbs
Weight with custom foam	0 lbs
Volume	33.94 gal
Buoyancy	214.95 lbs/max
Operating temperature	°F min -27.4 / max +194

Mod. 13527 BE

ACCESSORIES



HANDY BACKPACK CARRYING SYSTEM FOR GUNBAGS

Practical and easy to fix kit to turn the gunbags into backpacks to safely transport your rifles.

The detachable, padded shoulder straps, clip right in the back of the gunbags D-rings.

The ergonomic straps are designed to be fully adjustable in length.

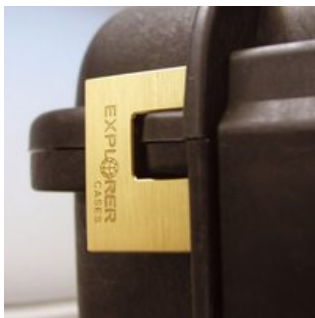
It works on GUNBAG 94, GUNBAG 114, GUNBAG 135 and GUNBAG 108.

Color: black.



PATENTED COMBINATION PADLOCK

Designed to fit snug to the Explorer case mould so as not to swing out



PATENTED HEAVY DUTY BRASS PADLOCK WITH KEYS

Designed to fit snug to the Explorer case mould so as not to swing out



TSA APPROVED PADLOCK WITH COMBINATION

The new TSA approved padlocks allow tsa® airport security agents to open the case without destroying the lock. TSA agents are trained to recognize the travel sentry certified logo and should not break the case lock.

FOAM SET FOR CASE 13527

Layers of pre cubed foam for the bottom and convoluted foam for the lid



PADDED GUN BAG FOR CASE 13513 AND 13527

Padded gunbag to protect long guns. Inclusive of a number of features to secure rifles and shotguns together with necessary accessories and ammunitions. GBAG 135 is designed to perfectly fit into Explorer Cases models 13515 and 13527 (up to two pieces). The gunbag is built with durable, 600D tear resistant polyester and robust zipper with lockable Velcro pull zipper for the main compartment. The main compartment features two neoprene hook-and-loop side flaps and adjustable straps to secure firearms. The front central compartment is equipped with adjustable interior straps to secure rifle position. The two side smaller pouches are designed to storage accessories and ammunitions. Both the main and front compartments are padded on all sides to protect and transport critical gear. This long gun bag features top and bottom compression straps and come with a removable shoulder strap. Personal ID window on the backside and front removable hook-and-loop screen-printable band.

The gunbag can easily become a backpack by fixing the BACKPACK KIT in its rear side (see BACKPACK KIT accessory in BACKPACK SYSTEMS section for more details).



DIGITAL LOCK FOR CASES 9413, 11413, 13513, 13527, 15416, 10826 AND 10840

Kit includes 2 pcs.





BLIND INSERT

Kit includes 6 pcs.

Whenever the slots are not going to be used for in-built applications, those can be closed by blind inserts that will give the case a better and finished interior look.



METAL BRACKET

Kit includes 6 pcs.

All models (except for the 1908) are internally equipped with specific slots, to apply the optional metal or plastic brackets which provide either a panel's fixing points or a fix mechanical joint inside the case, to build more complete applications. This way the case becomes a real workstation, rather than just a carrying container. As the panel mounting brackets are mechanically fixed by screws, they can be removed when necessary. The dedicated screws allow the case to remain waterproof, and help the panels to be removed easily and quickly



PLASTIC BRACKET

Kit includes 6 pcs.

All models (except for the 1908) are internally equipped with specific slots, to apply the optional metal or plastic brackets which provide either a panel's fixing points or a fix mechanical joint inside the case, to build more complete applications. This way the case becomes a real workstation, rather than just a carrying container. As the panel mounting brackets are mechanically fixed by screws, they can be removed when necessary. The dedicated screws allow the case to remain waterproof, and help the panels to be removed easily and quickly



CONVOLUTED FOAM SET FOR CASE 13513 AND 13527

(includes 2 pcs.)



PROTECTIVE SLEEVE FOR PC 13"-13.3"

Protective padded notebook sleeve. Protects the laptop from shocks and scratches.

FEATURES





Internal slots for optional panel mounting brackets or panel mounting rings



(from model 3818 on)



The internal stop ring prevents valve from being completely extracted (Art. PURGEVALVE.B)



(Art. LABELCOVER + nr. art.)



(Art. NEOSEAL + nr. art.)

