

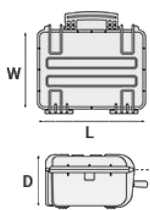
## Mod. 1908.B

### COPOLYMER POLYPROPYLENE WATERPROOF CASE

Small waterproof cases for sensitive devices. Available in three colors, black, olive drab and orange. Sealing o-ring, manual purge valve. Optional shoulder strap.



#### METRIC MM-KG-C°



#### INTERNAL DIMENSIONS

L LENGTH	190 mm
W WIDTH	125 mm
D DEPTH	85 mm
LID	20 mm
BASE	65 mm

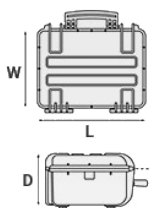
#### EXTERNAL DIMENSIONS

L LENGTH	216 mm
W WIDTH	180 mm
D DEPTH	102 mm

#### OTHER DATA

WEIGHT EMPTY	0.70 Kg
WEIGHT WITH FOAM	0.80 Kg
WEIGHT WITH CUSTOM FOAM	Kg
VOLUME	2 lt
BUOYANCY	1.40 Kg/max
OPERATING TEMPERATURE	°C min -33 / max +90

#### IMPERIAL IN-LBS-F°



#### INTERNAL DIMENSIONS

L LENGTH	7 1/2 in
W WIDTH	4 15/16 in
D DEPTH	3 3/8 in
LID	13/16 in
BASE	2 9/16 in

#### EXTERNAL DIMENSIONS

L LENGTH	8 1/2 in
W WIDTH	7 1/16 in
D DEPTH	4 in

#### OTHER DATA

WEIGHT EMPTY	1.54 lbs
WEIGHT WITH FOAM	1.76 lbs
WEIGHT WITH CUSTOM FOAM	lbs
VOLUME	0.52 gal
BUOYANCY	3.08 lbs/max
OPERATING TEMPERATURE	°F min -27.4 / max +194

## FEATURES



**CORROSION PROOF METAL HINGES WITH LID STAY FEATURES**



**LATCH**



**SEALING O-RING**  
(Art. NEOSEAL + nr. art.)



**MANUAL PRESSURE RELEASE VALVE**

The internal stop ring prevents valve from being completely extracted (Art. PURGEVALVE.B)



### **PVC WATERPROOF I. D. REMOVABLE LABEL**

(Art. LABELCOVER + nr. art.)



### **OPTIONAL SHOULDER STRAP (universal)**

(art. SHOULDERKIT.U)

## ACCESSORIES



### PADDED DIVIDER FOR 1908

DIV1908

Padded dividers with internal adjustable partitions. Ideal to protect and transport any kind of sensitive equipment. Thanks to their modularity, they can be easily combined.



### CONVOLUTED FOAM SET FOR CASE 1908 AND 1913

LIDFOAM.19

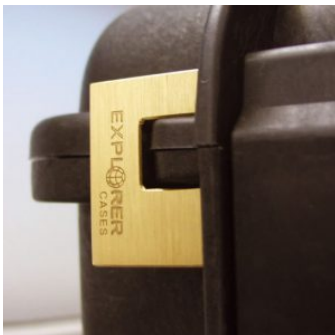
(includes 2 pcs.)



### ADJUSTABLE SHOULDER KIT

SHOULDERKIT.U

The kit is composed by: shoulder strap with plastic endings, 4 threaded knots, 2 metal plates. (min. extension 106 cm, max. extension 201 cm). The strap comes with the Explorer logo. Suitable for models: 1908, 1913, 2209, 2214, 3005, 4412, 4419, 5117, 9413, 11413 and 13513.



### PATENTED HEAVY DUTY BRASS PADLOCK WITH KEYS

EXPL PADLOCK

Designed to fit snug to the Explorer case mould so as not to swing out



### PATENTED COMBINATION PADLOCK

EXPL COMBILOCK

Designed to fit snug to the Explorer case mould so as not to swing out



### TSA APPROVED PADLOCK WITH COMBINATION

EXPL TSA.DIGILOCK

The new TSA approved padlocks allow tsa® airport security agents to open the case without destroying the lock. TSA agents are trained to recognize the travel sentry certified logo and should not break the case lock.



### FOAM SET FOR CASE 1908

FOAM.1908

Layers of pre cubed foam for the bottom and convoluted foam for the lid.

The pre-cubed foam allows the user to tailor the insert to their own individual requirement.

The convoluted foam in the lid helps to firmly keep the stored equipment when the case is closed.

Available for 1908 model.

Color: dark grey.

[DOWNLOAD PDF](#)

## SPARE PARTS



### Polyurethane o-ring seal for models 1908 and 1913

KIN.0845

Includes:  
1 o-ring



### Manual pressure release valve for models 1908-1913-2209-2214-3005

KIN.0525

Includes: 1 black purge valve (+ o-ring + pin) 1 threaded bush 1 snap ring (Seeger)



### Handle for model from 1908 to 2214

KIN.0477

Includes:  
1 military green handle  
2 fixing pins



### Handle for model from 1908 to 2214

KIN.0476

Includes:  
1 orange handle  
2 fixing pins



**Latch for models from 1908 to 2214**

KIN.0440

Includes:  
1 orange latch  
1 fixing pin



**Latch for models from 1908 to 2214**

KIN.0442

Includes:  
1 black latch  
1 fixing pin



**Name tag holder for models 1908-1913-2209-2214-3005-5140**

KIN.0497

Includes: 1 transparent PP name tag holder



**Latch for models from 1908 to 2214**

KIN.0441

Includes:  
1 military green latch  
1 fixing pin



**Handle for model from 1908 to 2214**

KIN.0478

Includes:

- 1 black handle
- 2 fixing pins