

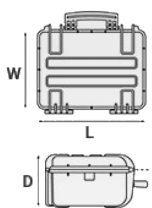
Mod. 1913.B

COPOLYMER POLYPROPYLENE WATERPROOF CASE

Small shock proof cases ideal to protect cameras and small devices. Available empty and with foam. IP67 certification. Three colours available.



METRIC MM-KG-C°



INTERNAL DIMENSIONS

L LENGTH	190 mm
W WIDTH	125 mm
D DEPTH	135 mm
LID	20 mm
BASE	115 mm

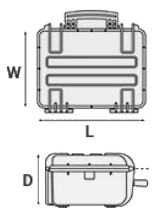
EXTERNAL DIMENSIONS

L LENGTH	216 mm
W WIDTH	180 mm
D DEPTH	152 mm

OTHER DATA

WEIGHT EMPTY	0.85 Kg
WEIGHT WITH FOAM	0.92 Kg
WEIGHT WITH CUSTOM FOAM	Kg
VOLUME	3.20 lt
BUOYANCY	2.40 Kg/max
OPERATING TEMPERATURE	°C min -33 / max +90

IMPERIAL IN-LBS-F°



INTERNAL DIMENSIONS

L LENGTH	7 1/2 in
W WIDTH	4 15/16 in
D DEPTH	5 5/16 in
LID	13/16 in
BASE	4 1/2 in

EXTERNAL DIMENSIONS

L LENGTH	8 1/2 in
W WIDTH	7 1/16 in
D DEPTH	6 in

OTHER DATA

WEIGHT EMPTY	1.87 lbs
WEIGHT WITH FOAM	2.02 lbs
WEIGHT WITH CUSTOM FOAM	lbs
VOLUME	0.79 gal
BUOYANCY	5.29 lbs/max
OPERATING TEMPERATURE	°F min -27.4 / max +194

FEATURES



CORROSION PROOF METAL HINGES WITH LID STAY FEATURES



INTERNAL SLOTS

Internal slots for optional panel mounting brackets or panel mounting rings



LATCH



SEALING O-RING

(Art. NEOSEAL + nr. art.)



MANUAL PRESSURE RELEASE VALVE

The internal stop ring prevents valve from being completely extracted (Art. PURGEVALVE.B)



PVC WATERPROOF I. D. REMOVABLE LABEL

(Art. LABELCOVER + nr. art.)



OPTIONAL SHOULDER STRAP (universal)

(art. SHOULDERKIT.U)

ACCESSORIES



PADDED DIVIDER FOR 1913

DIV1913

Padded dividers with internal adjustable partitions. Ideal to protect and transport any kind of sensitive equipment. Thanks to their modularity, they can be easily combined.



CONVOLUTED FOAM SET FOR CASE 1908 AND 1913

LIDFOAM.19

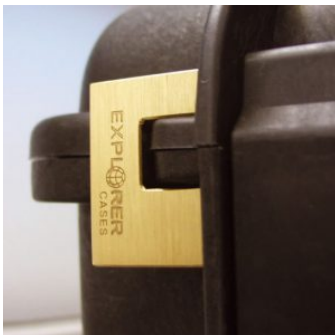
(includes 2 pcs.)



ADJUSTABLE SHOULDER KIT

SHOULDERKIT.U

The kit is composed by: shoulder strap with plastic endings, 4 threaded knots, 2 metal plates. (min. extension 106 cm, max. extension 201 cm). The strap comes with the Explorer logo. Suitable for models: 1908, 1913, 2209, 2214, 3005, 4412, 4419, 5117, 9413, 11413 and 13513.



PATENTED HEAVY DUTY BRASS PADLOCK WITH KEYS

EXPL PADLOCK

Designed to fit snug to the Explorer case mould so as not to swing out



PATENTED COMBINATION PADLOCK

EXPL COMBILOCK

Designed to fit snug to the Explorer case mould so as not to swing out



BLIND INSERT

KIT.EXPL.PLUGS

Kit includes 6 pcs. Whenever the slots are not going to be used for in-built applications, those can be closed by blind inserts that will give the case a better and finished interior look.



TSA APPROVED PADLOCK WITH COMBINATION

EXPL TSA.DIGILOCK

The new TSA approved padlocks allow tsa® airport security agents to open the case without destroying the lock. TSA agents are trained to recognize the travel sentry certified logo and should not break the case lock.



METAL BRACKET

KIT SUPP.EXPL.

Kit includes 6 pcs. All models (except for the 1908) are internally equipped with specific slots, to apply the optional metal or plastic brackets which provide either a panel's fixing points or a fix mechanical joint inside the case, to build more complete applications. This way the case becomes a real workstation, rather than just a carrying container. As the panel mounting brackets are mechanically fixed by screws, they can be removed when necessary. The dedicated screws allow the case to remain waterproof, and help the panels to be removed easily and quickly



FOAM SET FOR CASE 1913

FOAM.1913

Layers of pre cubed foam for the bottom and convoluted foam for the lid. The pre-cubed foam allows the user to tailor the insert to their own individual requirement. The convoluted foam in the lid helps to firmly keep the stored equipment when the case is closed. Available for 1913 model. Color: dark grey. [DOWNLOAD PDF](#)



PLASTIC BRACKET

KIT SUPP.PLAST.

Kit includes 6 pcs. All models (except for the 1908) are internally equipped with specific slots, to apply the optional metal or plastic brackets which provide either a panel's fixing points or a fix mechanical joint inside the case, to build more complete applications. This way the case becomes a real workstation, rather than just a carrying container. As the panel mounting brackets are mechanically fixed by screws, they can be removed when necessary. The dedicated screws allow the case to remain waterproof, and help the panels to be removed easily and quickly

SPARE PARTS



Polyurethane o-ring seal for models 1908 and 1913

KIN.0845

Includes:
1 o-ring



Manual pressure release valve for models 1908-1913-2209-2214-3005

KIN.0525

Includes: 1 black purge valve (+ o-ring + pin) 1 threaded bush 1 snap ring (Seeger)



Handle for model from 1908 to 2214

KIN.0477

Includes:
1 military green handle
2 fixing pins



Handle for model from 1908 to 2214

KIN.0476

Includes:
1 orange handle
2 fixing pins



Latch for models from 1908 to 2214

KIN.0440

Includes:
1 orange latch
1 fixing pin



Latch for models from 1908 to 2214

KIN.0442

Includes:
1 black latch
1 fixing pin



Name tag holder for models 1908-1913-2209-2214-3005-5140

KIN.0497

Includes: 1 transparent PP name tag holder



Latch for models from 1908 to 2214

KIN.0441

Includes:
1 military green latch
1 fixing pin



Handle for model from 1908 to 2214

KIN.0478

Includes:

- 1 black handle
- 2 fixing pins