

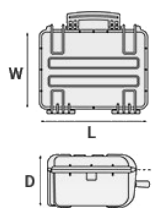
## Mod. 3005.0

### 3005 – EXPLORER CASES, ULTRALIGHT WATERPROOF CASE

Case size makes it the ideal solution to store one ipad/compact notebook with accessories. It can be stored in vertical position. Retractable handle. Padlockable points.



#### METRIC MM-KG-C°



#### INTERNAL DIMENSIONS

<b>L LENGTH</b>	300 mm
<b>W WIDTH</b>	210 mm
<b>D DEPTH</b>	58 mm
<b>LID</b>	20 mm
<b>BASE</b>	38 mm

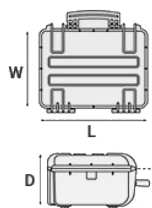
#### EXTERNAL DIMENSIONS

<b>L LENGTH</b>	326 mm
<b>W WIDTH</b>	269 mm
<b>D DEPTH</b>	75 mm

#### OTHER DATA

<b>WEIGHT EMPTY</b>	1.10 Kg
<b>WEIGHT WITH FOAM</b>	1.20 Kg
<b>WEIGHT WITH CUSTOM FOAM</b>	Kg
<b>VOLUME</b>	4 lt
<b>BUOYANCY</b>	2.10 Kg/max
<b>OPERATING TEMPERATURE</b>	°C min +90 / max -33

#### IMPERIAL IN-LBS-F°



#### INTERNAL DIMENSIONS

<b>L LENGTH</b>	11 13/16 in
<b>W WIDTH</b>	8 1/4 in
<b>D DEPTH</b>	2 5/16 in
<b>LID</b>	13/16 in
<b>BASE</b>	1 1/2 in

#### EXTERNAL DIMENSIONS

<b>L LENGTH</b>	12 13/16 in
<b>W WIDTH</b>	10 9/16 in
<b>D DEPTH</b>	2 15/16 in

#### OTHER DATA

<b>WEIGHT EMPTY</b>	2.42 lbs
<b>WEIGHT WITH FOAM</b>	2.64 lbs
<b>WEIGHT WITH CUSTOM FOAM</b>	lbs
<b>VOLUME</b>	1.05 gal
<b>BUOYANCY</b>	4.62 lbs/max
<b>OPERATING TEMPERATURE</b>	°F min +194 / max -27.4

## FEATURES



### CORROSION PROOF METAL HINGES WITH LID STAY FEATURES



### INTERNAL SLOTS

Internal slots for optional panel mounting brackets or panel mounting rings



### SEALING O-RING

(Art. NEOSEAL + nr. art.)



### MANUAL PRESSURE RELEASE VALVE

The internal stop ring prevents valve from being completely extracted (Art. PURGEVALVE.B)



### **PVC WATERPROOF I. D. REMOVABLE LABEL**

(Art. LABELCOVER + nr. art.)



### **COUNTERBALANCE SUPPORTS**

(in certain models)

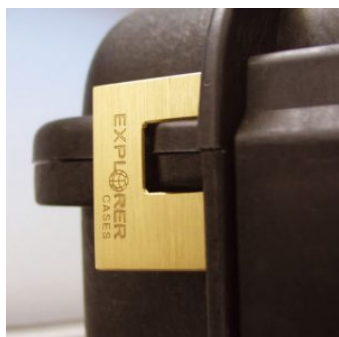
## ACCESSORIES



### ADJUSTABLE SHOULDER KIT

SHOULDERKIT.U

The kit is composed by: shoulder strap with plastic endings, 4 threaded knots, 2 metal plates. (min. extension 106 cm, max. extension 201 cm). The strap comes with the Explorer logo. Suitable for models: 1908, 1913, 2209, 2214, 3005, 4412, 4419, 5117, 9413, 11413 and 13513.



### PATENTED HEAVY DUTY BRASS PADLOCK WITH KEYS

EXPL PADLOCK

Designed to fit snug to the Explorer case mould so as not to swing out



### PATENTED COMBINATION PADLOCK

EXPL COMBILOCK

Designed to fit snug to the Explorer case mould so as not to swing out



### BLIND INSERT

KIT.EXPL.PLUGS

Kit includes 6 pcs. Whenever the slots are not going to be used for in-built applications, those can be closed by blind inserts that will give the case a better and finished interior look.



### **TSA APPROVED PADLOCK WITH COMBINATION**

EXPL TSA.DIGILOCK

The new TSA approved padlocks allow tsa® airport security agents to open the case without destroying the lock. TSA agents are trained to recognize the travel sentry certified logo and should not break the case lock.



### **METAL BRACKET**

KIT SUPP.EXPL.

Kit includes 6 pcs. All models (except for the 1908) are internally equipped with specific slots, to apply the optional metal or plastic brackets which provide either a panel's fixing points or a fix mechanical joint inside the case, to build more complete applications. This way the case becomes a real workstation, rather than just a carrying container. As the panel mounting brackets are mechanically fixed by screws, they can be removed when necessary. The dedicated screws allow the case to remain waterproof, and help the panels to be removed easily and quickly



### **PLASTIC BRACKET**

KIT SUPP.PLAST.

Kit includes 6 pcs. All models (except for the 1908) are internally equipped with specific slots, to apply the optional metal or plastic brackets which provide either a panel's fixing points or a fix mechanical joint inside the case, to build more complete applications. This way the case becomes a real workstation, rather than just a carrying container. As the panel mounting brackets are mechanically fixed by screws, they can be removed when necessary. The dedicated screws allow the case to remain waterproof, and help the panels to be removed easily and quickly

## SPARE PARTS



### Metal clips for mod.

3005-4209-16-4412-19-4820-5140-5218-21-5325-26-5822-23-33-762

6-30-35-41-7726-45-7814-9413-33-10826-40-11413-13513-27-15416

KIN.1214

Includes: 4 metal reinforcements



### Polyurethane o-ring seal for model 3005

KIN.1118

Includes: 1 o-ring



### Latch for model 3005

KIN.1125

Includes: 1 orange latch 1 fixing pin



### Latch for model 3005

KIN.1123

Includes: 1 desert tan latch 1 fixing pin



**Latch for model 3005**

KIN.1121

Includes: 1 military green latch 1 fixing pin



**Latch for model 3005**

KIN.1116

Includes: 1 black latch 1 fixing pin



**Rubber coated handle for model 3005**

KIN.1126

Includes: 1 orange handle 2 fixing pins



**Rubber coated handle for model 3005**

KIN.1124

Includes: 1 desert tan handle 2 fixing pins



**Rubber coated handle for model 3005**

KIN.1122

Includes: 1 military green handle 2 fixing pins



**Rubber coated handle for model 3005**

KIN.1117

Includes: 1 black handle 2 fixing pins



**Name tag holder for models 1908-1913-2209-2214-3005-5140**

KIN.0497

Includes: 1 transparent PP name tag holder