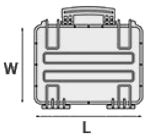



Mod.

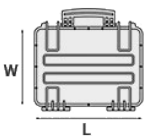

3005 – EXPLORER CASES, ULTRALIGHT WATERPROOF CASE

Case size makes it the ideal solution to store one ipad/compact notebook with accessories. It can be stored in vertical position. Retractable handle. Padlockable points.

METRIC MM-KG-C°

		INTERNAL DIMENSIONS		EXTERNAL DIMENSIONS		OTHER DATA	
	L LENGTH	300 mm	L LENGTH	326 mm	WEIGHT EMPTY	1.10 Kg	
	W WIDTH	210 mm	W WIDTH	269 mm	WEIGHT WITH FOAM	1.20 Kg	
	D DEPTH	58 mm	D DEPTH	75 mm	WEIGHT WITH CUSTOM	Kg	
	LID	20 mm			FOAM		
	BASE	38 mm			VOLUME	4 lt	
					BUOYANCY	2.10 Kg/max	
					OPERATING	°C min +90 / max -33	
					TEMPERATURE		

IMPERIAL IN-LBS-F°

		INTERNAL DIMENSIONS		EXTERNAL DIMENSIONS		OTHER DATA	
	L LENGTH	11 13/16 in	L LENGTH	12 13/16 in	WEIGHT EMPTY	2.42 lbs	
	W WIDTH	8 1/4 in	W WIDTH	10 9/16 in	WEIGHT WITH FOAM	2.64 lbs	
	D DEPTH	2 5/16 in	D DEPTH	2 15/16 in	WEIGHT WITH CUSTOM	lbs	
	LID	13/16 in			FOAM		
	BASE	1 1/2 in			VOLUME	1.05 gal	
					BUOYANCY	4.62 lbs/max	
					OPERATING	°F min +194 / max	
					TEMPERATURE	-27.4	

FEATURES



CORROSION PROOF METAL HINGES WITH LID STAY FEATURES



INTERNAL SLOTS

Internal slots for optional panel mounting brackets or panel mounting rings



SEALING O-RING

(Art. NEOSEAL + nr. art.)



MANUAL PRESSURE RELEASE VALVE

The internal stop ring prevents valve from being completely extracted (Art. PURGEVALVE.B)



PVC WATERPROOF I. D. REMOVABLE LABEL

(Art. LABELCOVER + nr. art.)



COUNTERBALANCE SUPPORTS

(in certain models)

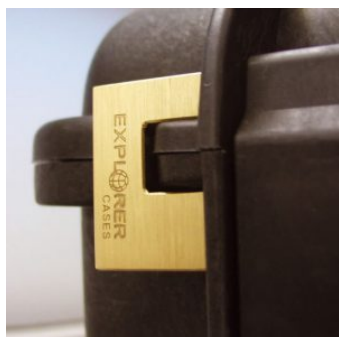
ACCESSORIES



ADJUSTABLE SHOULDER KIT

SHOULDERKIT.U

The kit is composed by: shoulder strap with plastic endings, 4 threaded knots, 2 metal plates. (min. extension 106 cm, max. extension 201 cm). The strap comes with the Explorer logo. Suitable for models: 1908, 1913, 2209, 2214, 3005, 4412, 4419, 5117, 9413, 11413 and 13513.



PATENTED HEAVY DUTY BRASS PADLOCK WITH KEYS

EXPL PADLOCK

Designed to fit snug to the Explorer case mould so as not to swing out



PATENTED COMBINATION PADLOCK

EXPL COMBILOCK

Designed to fit snug to the Explorer case mould so as not to swing out



BLIND INSERT

KIT.EXPL.PLUGS

Kit includes 6 pcs. Whenever the slots are not going to be used for in-built applications, those can be closed by blind inserts that will give the case a better and finished interior look.



TSA APPROVED PADLOCK WITH COMBINATION

EXPL TSA.DIGILOCK

The new TSA approved padlocks allow tsa® airport security agents to open the case without destroying the lock. TSA agents are trained to recognize the travel sentry certified logo and should not break the case lock.



METAL BRACKET

KIT SUPP.EXPL.

Kit includes 6 pcs. All models (except for the 1908) are internally equipped with specific slots, to apply the optional metal or plastic brackets which provide either a panel's fixing points or a fix mechanical joint inside the case, to build more complete applications. This way the case becomes a real workstation, rather than just a carrying container. As the panel mounting brackets are mechanically fixed by screws, they can be removed when necessary. The dedicated screws allow the case to remain waterproof, and help the panels to be removed easily and quickly



PLASTIC BRACKET

KIT SUPP.PLAST.

Kit includes 6 pcs. All models (except for the 1908) are internally equipped with specific slots, to apply the optional metal or plastic brackets which provide either a panel's fixing points or a fix mechanical joint inside the case, to build more complete applications. This way the case becomes a real workstation, rather than just a carrying container. As the panel mounting brackets are mechanically fixed by screws, they can be removed when necessary. The dedicated screws allow the case to remain waterproof, and help the panels to be removed easily and quickly

SPARE PARTS



Metal clips for mod.

3005-4209-16-4412-19-4820-5140-5218-21-5325-26-5822-23-33-762

6-30-35-41-7726-45-7814-9413-33-10826-40-11413-13513-27-15416

KIN.1214

Includes: 4 metal reinforcements



Polyurethane o-ring seal for model 3005

KIN.1118

Includes: 1 o-ring



Latch for model 3005

KIN.1125

Includes: 1 orange latch 1 fixing pin



Latch for model 3005

KIN.1123

Includes: 1 desert tan latch 1 fixing pin



Latch for model 3005

KIN.1121

Includes: 1 military green latch 1 fixing pin



Latch for model 3005

KIN.1116

Includes: 1 black latch 1 fixing pin



Rubber coated handle for model 3005

KIN.1126

Includes: 1 orange handle 2 fixing pins



Rubber coated handle for model 3005

KIN.1124

Includes: 1 desert tan handle 2 fixing pins



Rubber coated handle for model 3005

KIN.1122

Includes: 1 military green handle 2 fixing pins



Rubber coated handle for model 3005

KIN.1117

Includes: 1 black handle 2 fixing pins



Name tag holder for models 1908-1913-2209-2214-3005-5140

KIN.0497

Includes: 1 transparent PP name tag holder