

## Mod. 3818.B

### COPOLYMER POLYPROPYLENE WATERPROOF CASE

Medium size case with jam-free purge valve and latches. Soft grip rubber handle reinforced with corrosion proof steel pins. Panel mounting bracket slots.



METRIC MM-KG-C°



#### INTERNAL DIMENSIONS

<b>L LENGTH</b>	380 mm
<b>W WIDTH</b>	270 mm
<b>D DEPTH</b>	180 mm
<b>LID</b>	47 mm
<b>BASE</b>	133 mm

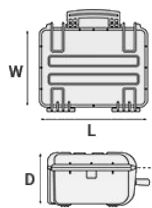
#### EXTERNAL DIMENSIONS

<b>L LENGTH</b>	410 mm
<b>W WIDTH</b>	340 mm
<b>D DEPTH</b>	205 mm

#### OTHER DATA

<b>WEIGHT EMPTY</b>	3.14 Kg
<b>WEIGHT WITH FOAM</b>	3.58 Kg
<b>WEIGHT WITH CUSTOM FOAM</b>	Kg
<b>VOLUME</b>	18.40 lt
<b>BUOYANCY</b>	12.40 Kg/max
<b>OPERATING TEMPERATURE</b>	°C min '-33 / max '+90

IMPERIAL IN-LBS-F°



#### INTERNAL DIMENSIONS

<b>L LENGTH</b>	14 15/16 in
<b>W WIDTH</b>	10 5/8 in
<b>D DEPTH</b>	7 1/16 in
<b>LID</b>	1 7/8 in
<b>BASE</b>	5 1/4 in

#### EXTERNAL DIMENSIONS

<b>L LENGTH</b>	16 1/8 in
<b>W WIDTH</b>	13 3/8 in
<b>D DEPTH</b>	8 1/16 in

#### OTHER DATA

<b>WEIGHT EMPTY</b>	6.92 lbs
<b>WEIGHT WITH FOAM</b>	7.89 lbs
<b>WEIGHT WITH CUSTOM FOAM</b>	lbs
<b>VOLUME</b>	4.75 gal
<b>BUOYANCY</b>	27.33 lbs/max
<b>OPERATING TEMPERATURE</b>	°F min '-27.4 / max '+194

## FEATURES



### **CORROSION PROOF METAL HINGES WITH LID STAY FEATURES**



### **FIXING POINTS**

Additional fixing points on the lid, available on certain models



### **INTERNAL SLOTS**

Internal slots for optional panel mounting brackets or panel mounting rings



### **JAM FREE LATCHES WITH EASY-OPENING MECHANISM**

(from model 3818 on)



### SEALING O-RING

(Art. NEOSEAL + nr. art.)



### MANUAL PRESSURE RELEASE VALVE

The internal stop ring prevents valve from being completely extracted (Art. PURGEVALVE.B)



### PVC WATERPROOF I. D. REMOVABLE LABEL

(Art. LABELCOVER + nr. art.)



### SOFT GRIP RUBBER HANDLE

Load tested handle, reinforced with corrosion proof steel pins



## **COUNTERBALANCE SUPPORTS**

(in certain models)

## ACCESSORIES



### PROTECTIVE SLEEVE FOR PC 13"-13.3"

TOP ENVELOPE 13

Protective padded notebook sleeve. Protects the laptop from shocks and scratches.



### PADDED DIVIDER FOR 3818

DIV3818

Padded dividers with internal adjustable partitions. Ideal to protect and transport any kind of sensitive equipment. Thanks to their modularity, they can be easily combined.



### PADDED BAG WITH ADJUSTABLE DIVIDERS

BAG-E

Highly durable padded bag with rubber coated handle and waterproof zipper with lockable Velcro pull zipper. Practical external front pouch for documents, removable shoulder strap and rubber feet on the bottom to grant better grip. Internal adjustable padded dividers for flexible configuration. Ideal to protect sensitive equipment (ie electronic, photographic, broadcasting, medical etc.). Suitable for case 3818. Color: black/red



### LID PANEL WITH ORGANIZED POUCHES

PANEXPL38

Practical and robust lid panel with pouches, ideal for small accessories and documents. Suitable for case 3818. Color: black.



### PANEL RING FOR CASE 3818

PANRING38.USA

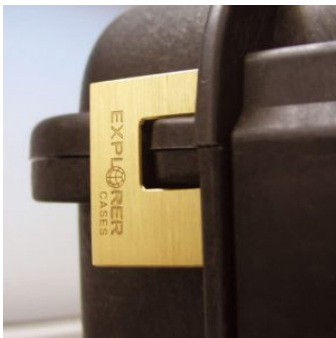
Includes Imperial system fixing screws. User friendly panel frames, they can be used to fix several kind of panels, from plastic to aluminum ones. Equipped with an additional gasket (which will be squeezed in between the panel and the frame) they can provide the case with a perfect instrumentation surface and a further humidity and dust resistance when the case is used in the field. Completely removable, resistant and light, these panel rings help to transform the Explorer cases into practical workstations.



### CONVOLUTED FOAM SET FOR CASES 3815-3818-3823

LIDFOAM.38

(includes 2 pcs.)



### PATENTED HEAVY DUTY BRASS PADLOCK WITH KEYS

EXPL PADLOCK

Designed to fit snug to the Explorer case mould so as not to swing out



### PATENTED COMBINATION PADLOCK

EXPL COMBILOCK

Designed to fit snug to the Explorer case mould so as not to swing out





### BLIND INSERT

KIT.EXPL.PLUGS

Kit includes 6 pcs. Whenever the slots are not going to be used for in-built applications, those can be closed by blind inserts that will give the case a better and finished interior look.



### TSA APPROVED PADLOCK WITH COMBINATION

EXPL TSA.DIGILOCK

The new TSA approved padlocks allow tsa® airport security agents to open the case without destroying the lock. TSA agents are trained to recognize the travel sentry certified logo and should not break the case lock.



### METAL BRACKET - KIT SUPP. EXPL

KIT SUPP.EXPL.

KIT SUPP. EXPL - Kit includes 6 pcs. All models (except for the 1908) are internally equipped with specific slots, to apply the optional metal or plastic brackets which provide either a panel's fixing points or a fix mechanical joint inside the case, to build more complete applications. This way the case becomes a real workstation, rather than just a carrying container. As the panel mounting brackets are mechanically fixed by screws, they can be removed when necessary. The dedicated screws allow the case to remain waterproof, and help the panels to be removed easily and quickly



### PLASTIC BRACKET

KIT SUPP.PLAST.

Kit includes 6 pcs. All models (except for the 1908) are internally equipped with specific slots, to apply the optional metal or plastic brackets which provide either a panel's fixing points or a fix mechanical joint inside the case, to build more complete applications. This way the case becomes a real workstation, rather than just a carrying container. As the panel mounting brackets are mechanically fixed by screws, they can be removed when necessary. The dedicated screws allow the case to remain waterproof, and help the panels to be removed easily and quickly



### PANEL RING FOR CASE 3818

PANRING38

Includes Metric system fixing screws. User friendly panel frames, they can be used to fix several kind of panels, from plastic to aluminum ones. Equipped with an additional gasket (which will be squeezed in between the panel and the frame) they can provide the case with a perfect instrumentation surface and a further humidity and dust resistance when the case is used in the field. Completely removable, resistant and light, these panel rings help to transform the Explorer cases into practical workstations.



### FOAM SET FOR CASE 3818

FOAM.3818

Layers of pre-cubed foam for the bottom and convoluted foam for the lid. The pre-cubed foam allows the user to tailor the insert to their own individual requirement. The convoluted foam in the lid helps to firmly keep the stored equipment when the case is closed. Available for 3818 model. Color: dark grey. [DOWNLOAD PDF](#)



### HANDY BACKPACK CARRYING SYSTEM FOR CASES

BACKPACK M

Made of robust tear resistant polyester. Designed with adjustable and comfortable padded shoulder straps and belt. Provided with an external pocket for small accessories, with Velcro strap. Ideal wherever a free hand movement is required, like in outdoor activities, extreme sports, emergency, rescue, trekking, industrial field, etc. Suitable for models 3317, 3818 and 5117. Color: black.



## SPARE PARTS



### Rubber coated handle for mod. 3818-4412-4419-5117-5122

KIN.0479

Includes: 1 black handle 2 fixing pins



### Rubber coated handle for models 3818-4412-4419-5117-5122

KIN.0469

Includes: 1 military green handle 2 fixing pins



### Name tag holder for mod. 2712-2717-3317-3317W-3818-5117-5122-MUB78

KIN.0496

Includes: 1 transparent name tag holder



### Easy-opening latch for models from 3818 up

KIN.0446

Includes:  
1 black latch  
1 fixing pin



**Easy-opening latch for models from 3818 up**

KIN.0435

Includes:

1 military green latch

1 fixing pin



**Easy-opening latch for models from 3818 up**

KIN.0434

Includes:

1 orange latch

1 fixing pin



**Rubber coated handle for models 3818-4412-4419-5117-5122**

KIN.0468

Includes: 1 orange handle 2 fixing pins



**Polyurethane o-ring seal for model 3818**

KIN.0849

Includes:

1 o-ring



### Easy-opening latch for models from 3818 up

KIN.0883

Includes:

1 sand latch

1 fixing pin



### Manual pressure release valve for models from 2712 up (except mod. 3005)

KIN.0495

Includes: 1 black purge valve (+ o-ring + pin) 1 threaded bush 1 snap ring (Seeger)