



PISTOL & GUN

AN ITALIAN

COMPANY

EN 26.1



WATERPROOF CASES

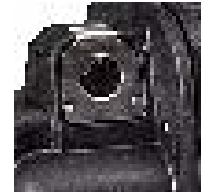


explorercases.com

PISTOL CASES



Automatic purge valve



Stainless steel reinforced padlockable points



MOD. 2712HL

IDEAL TO STORE UP TO 2 PISTOLS WITH MAGAZINES AND ACCESSORIES

- Lid can be set to slide-off
- Counterbalance supports

Mod. 2712HL.BCV

Case equipped with convoluted foam in both the bottom and the lid, and an additional middle double-sided convoluted foam separator.

INTERNAL CONFIGURATIONS

AVAILABLE COLORS



pre-cubed foam convoluted foam



BLACK MIL.GREEN SAND ORANGE BLUE YELLOW

CODES AND COLORS						INTERNAL	WEIGHT		VOLUME		BUOYANCY (max)		TEMP. RATING	
BLACK	MIL.GREEN	SAND	ORANGE	BLUE	YELLOW	CONFIG.	Kg	Lbs	Lt	Gal	Kg	Lbs	°C	°F
2712HLBE	2712HLGE	2712HLDE	2712HLOE	2712HLNE	2712HLYE	EMPTY	1.62	3.57	6.6	1.58	4.2	9.25	min. -33 max +90	min. -27.4 max +194
2712HLB	2712HLG	2712HLD	2712HLO	2712HLN	2712HLY	WIPRE CUBED FOAM	1.83	4.03						
2712HLBCV	2712HLGCV	2712HLDV	2712HLOV	2712HLNCV	2712HLYCV	W/CONVOLUT. FOAM	1.50	3.30						
CERTIFICATIONS							INTERNAL DIM. (mm - in)				EXTERNAL DIM. (mm - in)			
IP67 STANAG 4280 (ed. 2) DEF STAN 81-41 (lev. J)							L	W	D	Lid	Base	L	W	D
							276	200	120	35	85	305	270	144
							10.86	7.87	4.72	1.37	3.34	12.00	10.62	5.66

NSN available for most models on demand



MOD. 3005

IDEAL TO STORE 1 PISTOL WITH MAGAZINES AND ACCESSORIES

- Stainless steel padlockable points
- Can be stored in vertical position



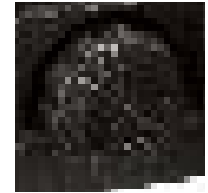
Optional shoulder kit can be mounted (Art. SHOULDERKIT.U)

Mod. 3005.BCV

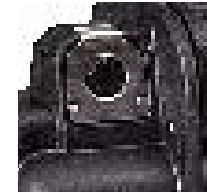
Case equipped with convoluted foam in both the bottom and the lid.



Can be stored in vertical position



Manual pressure release valve



Stainless steel padlockable points

Mod. 3005.DGB

Protects the pistol in the padded velcroed pouch, stores 5 magazines and a cleaning rod.



Up to 5 magazines

INTERNAL CONFIGURATIONS



pre-cubed foam convoluted foam padded pistol bag

AVAILABLE COLORS



BLACK MIL.GREEN SAND ORANGE

CODES AND COLORS				INTERNAL	WEIGHT		VOLUME		BUOYANCY (max)		TEMP. RATING	
BLACK	MIL. GREEN	SAND	ORANGE	CONFIGURATION	Kg	Lbs	Lt	Gal	Kg	Lbs	°C	°F
3005.BE	3005.GE	3005.DE	3005.OE	EMPTY	1.10	2.42	4	1.05	2.10	4.62	min. -33 max +90	min. -27.4 max +194
3005.B	3005.G	3005.D	3005.O	W/PRE CUBED FOAM	1.20	2.64						
3005.BCV	3005.GCV	3005.DCV	3005.OCV	W/CONVOLUTED FOAM	1.00	2.20						
3005.BGB	3005.GGB	3005.DGB	3005.OGB	W/PISTOL BAG	1.40	3.08						
CERTIFICATIONS					INTERNAL DIM. (mm - in)				EXTERNAL DIM. (mm - in)			
IP67 STANAG 4280 (ed. 2) DEF STAN 81-41 (lev. J)					L	W	D	Lid	Base	L	W	D
					300	210	58	20	38	326	269	75
					11.81	8.26	2.28	0.78	1.49	12.83	10.59	2.95

PISTOL CASES



MOD. 4209H

- Rubber grip handle
- Stainless steel padlockable points
- Optional shoulder strap available

Mod. 4209HL.BGB

IDEAL TO STORE UP TO 2 PISTOLS WITH MAGAZINES AND ACCESSORIES

Protects the pistols in the padded velcroed pouch, stores 5 magazines and a cleaning rod.

INTERNAL CONFIGURATIONS



pre-cubed foam convoluted foam padded pistol bag

Pistol bag
Art. GBAG 42
(included)

AVAILABLE COLORS



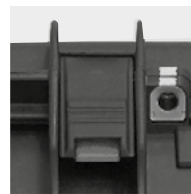
BLACK MIL. GREEN SAND ORANGE



Automatic purge valve



Optional shoulder kit can be mounted (Art. SHOULDERKIT.U)



Pull release latches and stainless steel padlockable points

Internal securing straps for magazines.

Up to 5 magazines.

MOD. 4419HL.B.6P

IDEAL TO STORE UP TO 6 PISTOLS AND 12 MAGAZINES

- Soft grip rubber handle
- Optional shoulder kit can be mounted (Art. SHOULDERKIT.U)
- Lid can be set to slide-off



AVAILABLE COLOR



BLACK



Automatic purge valve



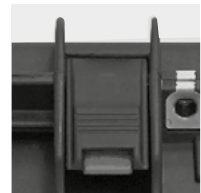
Stainless steel padlockable points



Automatic purge valve



Stainless steel padlockable points



Optional shipping label holder (Art. KIN.1224)



Self-oiling free running wheels

MOD. 5221HL.B.6P

IDEAL TO STORE UP TO 6 PISTOLS AND 12 MAGAZINES

- Soft grip rubber handle and telescopic handle
- Lid can be set to slide-off



AVAILABLE COLOR



BLACK

CODES AND COLORS				INTERNAL CONFIGURATION		WEIGHT		VOLUME		BUOYANCY (max)		TEMP. RATING	
BLACK						Kg	Lbs	Lt	Gal	Kg	Lbs	°C	°F
4419HL.B.6P				FOAM x 6 PISTOLS + 12 MAG.		4.35	9.59	29.20	7.66	19.7	43.43	min. -33	min. -27.4
5221HL.B.6P				FOAM x 6 PISTOLS + 12 MAG.		4.40	9.70	30.30	8.00	20.0	44.09	max +90	max +194
CERTIFICATIONS						INTERNAL DIM. (mm - in)			EXTERNAL DIM. (mm - in)				
IP67 - STANAG 4280 (ed. 2) - DEF STAN 81-41 (lev. J)						L	W	D	Lid	Base	L	W	D
						445	345	190	47	143	474	415	214
4419HL						17.51	13.58	7.48	1.85	5.62	18.66	16.33	8.42
5221HL						520	285	205	55	150	550	350	225
						20.47	11.22	8.07	2.16	5.90	21.65	13.77	8.85

OTHER MULTI PISTOL CASES SOLUTIONS AVAILABLE

NSN available for most models on demand



OTHER MULTI PISTOL CASES SOLUTIONS AVAILABLE

PISTOL CASES



CODES AND COLORS		INTERNAL CONFIGURATION	WEIGHT		VOLUME		BUOYANCY (max)		TEMP. RATING	
BLACK			Kg	Lbs	Lt	Gal	Kg	Lbs	°C	°F
5823.B.12P		FOAM x 12 PISTOLS + 24 MAG.	9.80	21.60	56.1	14.79	36.7	80.90	min. -33	min. -27.4
7630.B.24P		FOAM x 24 PISTOLS + 48 MAG.	15.00	33.06	113.1	29.85	81.80	180.33	max +90	max +194
CERTIFICATIONS			INTERNAL DIM. (mm - in)				EXTERNAL DIM. (mm - in)			
IP67 - STANAG 4280 (ed. 2) - DEF STAN 81-41 (lev. J)			L	W	D	Lid	Base	L	W	D
5823			580	440	220	60	160	670	510	262
			22.83	17.32	8.66	2.36	6.29	26.37	20.07	10.31
7630			765	485	305	60	245	860	560	355
			30.11	19.09	12.00	2.36	9.64	33.85	22.04	13.97

MOD. 5823.B.12P

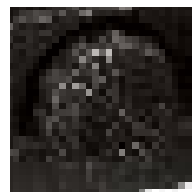
- IDEAL TO STORE UP TO 12 PISTOLS AND 24 MAGAZINES
- Side handles and soft grip rubber handle
 - Wheels and telescopic handle
 - Stainless steel padlockable points
 - Manual pressure release valve

AVAILABLE COLOR



MOD. 7630.B.24P

- IDEAL TO STORE UP TO 24 PISTOLS AND 48 MAGAZINES
- Side handles and large front handle
 - Wheels and retractable handle
 - Stainless steel padlockable points
 - Manual pressure release valve



Manual pressure release valve on both 5823 and 7630 models



Self-oiling free running wheels

TACTICAL CASES

MOD. 3110HL

- Stainless steel padlockable points
- Anti tilt support
- Optional shoulder strap available (Art. SHOULDERKIT.U)



Manual pressure release valve

INTERNAL CONFIGURATIONS

Ideal for storing and transporting a firearm suppressor



pre-cubed foam

AVAILABLE COLORS



SBR RACKING CASES

- All rifles can be securely housed with mounted optics
- Provided with mil grade foam slots to house the rifles and 18 mags
- Convuluted foam in the lid retains all guns and mags firmly in position during transportation



MOD. 7726.B D2

- Large front handle
- Side handles
- Self-oiling wheels
- Stainless steel padlockable points
- Automatic purge valve
- Extractable trolley handle
- Shipping label holder
- Fold flat carry handle



Extractable handle

Designed to house 6 rifles up to 76 cm and 18 mags



Shipping label holder

AVAILABLE COLOR



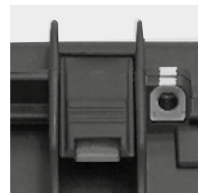
BLACK

NSN available for most models on demand



CODES AND COLORS				INTERNAL CONFIGURATION	WEIGHT		VOLUME		BUOYANCY (max)		TEMP. RATING	
BLACK	MIL. GREEN	SAND	ORANGE		Kg	Lbs	Lt	Gal	Kg	Lbs	°C	°F
3110HLBE	3110HLGE	3110HLDE	3110HLOE	EMPTY	9.55	2.09						
3110HLB	3110HLC	3110HLD	3110HLO	W/ PRE CUBED FOAM	1.05	2.31	3.4	0.85	2.5	5.51		
7726.B D2				FOAM x 6 RIFLES + 18 MAG.	13	28	115	31.17	70	154.32		
*CERTIFICATIONS					INTERNAL DIM. (mm - in)							
IP67 - STANAG 4280 (ed. 2) DEF STAN 81-41 (rev. J)					L	W	D	Lid	Base	L	W	D
3110HL					310	100	185	20	88	335	139	127
					12.20	3.93	4.25	0.79	3.46	13.22	5.25	5
7726					770	580	265	90	175	836	641	304
					30.3	22.8	10.4	3.54	6.88	32.9	25.2	11.96

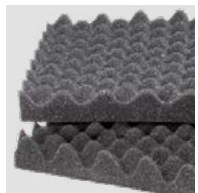
SMALL GUN CASES



Pull release latches and stainless steel padlockable points



Automatic purge valve



MOD. 5212HL

- Lid can be set to slide-off
- Soft grip rubber handle
- Automatic purge valve
- Pull release latches
- Stainless steel padlockable points
- Fixing points in the internal lid
- Slots in the base

MOD. 5215HL

- Lid can be set to slide-off
- Soft grip rubber handle
- Automatic purge valve
- Pull release latches
- Stainless steel padlockable points
- Fixing points in the internal lid
- Slots in the base

INTERNAL CONFIGURATIONS



pre-cubed foam



convoluted foam



Gun bag
Art. GBAG 52 (included)

AVAILABLE COLORS



BLACK MIL. GREEN SAND ORANGE



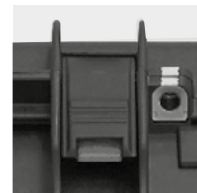
tactical gun bag

CODES AND COLORS				INTERNAL CONFIGURATION	WEIGHT		VOLUME		BUOYANCY (max)		TEMP. RATING				
BLACK	MIL. GREEN	SAND	ORANGE		Kg	Lbs	Lt	Gal	Kg	Lbs	°C	°F			
5212HL.BE	5212HL.GE	5212HL.DE	5212HL.OE	EMPTY	2.25	5.18	19	4.85	12.7	27.99	min. -33 max +90	min. -27.4 max +194			
5212HL.B	5212HL.G	5212HL.D	5212HL.O	W/PRE CUBED FOAM	2.85	6.28									
5215HL.BE	5215HL.GE	5215HL.DE	5215HL.OE	EMPTY	2.55	5.62	22	5.85							
5215HL.B	5215HL.G	5215HL.D	5215HL.O	W/PRE CUBED FOAM	3.05	6.72									
5215HL.BCV	5215HL.GCV	5215HL.DCV	5215HL.OCV	W/CONVOL. FOAM	2.85	6.28									
5215HL.BGB	5215HL.GGB	5215HL.DGB	5215HL.OGB	TACTICAL GUN BAG	3.50	7.71									
CERTIFICATIONS					INTERNAL DIM. (mm - in)				EXTERNAL DIM. (mm - in)						
IP67 - STANAG 4280 (ed. 2) - DEF STAN 81-41 (lev. J)					L	W	D	Lid	L	W	D				
5212HL					520	285	125	20	55	550	250	145			
					21.47	11.22	4.92	1.18	2.74	21.65	12.77	5.70			
5215HL					520	285	150	55	55	550	250	170			
					21.47	11.22	5.90	2.16	2.74	21.65	12.77	6.69			

NSN available for most models on demand



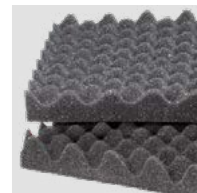
SHORT GUN CASES



Pull release latches and stainless steel padlockable points



Automatic purge valve



Two side handles

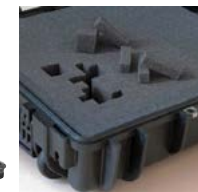
MOD. 7814HL

- Two side handles and front rubber grip handle
- Optional shoulder strap available (Art. SHOULDERKIT.U)

INTERNAL CONFIGURATIONS



pre-cubed foam



convoluted foam



high density full foam



tactical gun bag



BLACK MIL. GREEN SAND



Gun bag
Art. GBAG 76 (included)

CODES AND COLORS			INTERNAL	WEIGHT		VOLUME		BUOYANCY (max)		TEMP. RATING	
BLACK	MIL. GREEN	SAND	CONFIGURATION	Kg	Lbs	Lt	Gal	Kg	Lbs	°C	°F
7814HL.BE	7814HL.GE	7814HL.DE	EMPTY	5.50	12.12	39.6	10.46	25.3	55.77	min. -33 max +90	min. -27.4 max +194
7814HL.B	7814HL.G	7814HL.D	W/PRE CUBED FOAM	6.40	14.11						
7814HL.BCV	7814HL.GCV	7814HL.DCV	W/CONVOLUTED FOAM	6.10	13.44						
7814HL.BFF	7814HL.GFF	7814HL.DFF	W/FULL FOAM	6.70	14.77						
7814HL.BGB	7814HL.GGB	7814HL.DGB	W/TACTICAL GUN BAG	6.85	15.10						
CERTIFICATIONS				INTERNAL DIM. (mm - in)				EXTERNAL DIM. (mm - in)			
IP67 STANAG 4280 (ed. 2) DEF STAN 81-41 (lev. J)				L	W	D	Lid	Base	L	W	D
				780	350	145	42	103	846	427	167
				30.70	13.77	5.70	1.65	4.05	33.30	16.81	6.57

LONG
GUN CASES



MOD. 9413

- Two men lift side handles and large front handle
- Optional shoulder strap available (Art. SHOULDERKIT.U)

INTERNAL CONFIGURATIONS



pre-cubed foam



convoluted foam



high density full foam



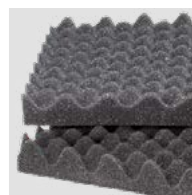
tactical gun bag



Automatic purge valve



Pull release latches and stainless steel padlockable points



Wheels with bearings

AVAILABLE COLORS



BLACK

MIL. GREEN

SAND



Gun bag
Art. GBAG 94 (included)

CODES AND COLORS			INTERNAL	WEIGHT		VOLUME		BUOYANCY (max)		TEMP. RATING	
BLACK	MIL. GREEN	SAND	CONFIGURATION	Kg	Lbs	Lt	Gal	Kg	Lbs	°C	°F
9413.BE	9413.GE	9413.DE	EMPTY	6.40	14.11	45.30	11.96	27.9	61.50	min. -33 max +90	min. -27.4 max +194
9413.B	9413.G	9413.D	W/PRE CUBED FOAM	7.30	16.09						
9413.BCV	9413.GCV	9413.DCV	W/CONVOLUTED FOAM	7.10	15.65						
9413.BFF	9413.GFF	9413.DFF	W/FULL FOAM	7.80	17.19						
9413.BGB	9413.GGB	9413.DGB	W/TACTICAL GUN BAG	8.40	18.51						
CERTIFICATIONS				INTERNAL DIM. (mm - in)				EXTERNAL DIM. (mm - in)			
IP67				L	W	D	Lid	Base	L	W	D
STANAG 4280 (ed. 2)				939	352	137	43	94	989	415	157
DEF STAN 81-41 (lev. J)				36.96	13.85	5.39	1.69	3.70	38.93	16.33	6.18

MOD. 11413

- Two men lift side handles and large front handle
- Optional shoulder strap available (Art. SHOULDERKIT.U)



INTERNAL CONFIGURATIONS



pre-cubed foam



convoluted foam



high density full foam



tactical gun bag

AVAILABLE COLORS



BLACK

MIL. GREEN

SAND



Gun bag
Art. GBAG 94 (included)

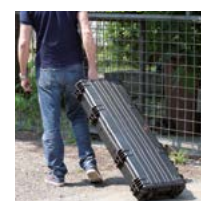
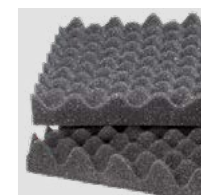
CODES AND COLORS			INTERNAL	WEIGHT		VOLUME		BUOYANCY (max)		TEMP. RATING	
BLACK	MIL. GREEN	SAND	CONFIGURATION	Kg	Lbs	Lt	Gal	Kg	Lbs	°C	°F
11413.BE	11413.GE	11413.DE	EMPTY	8.20	18.07	53.7	14.18	33.3	73.41	min. -33 max +90	min. -27.4 max +194
11413.B	11413.G	11413.D	W/PRE CUBED FOAM	9.30	20.50						
11413.BCV	11413.GCV	11413.DCV	W/CONVOLUTED FOAM	9.10	20.06						
11413.BFF	11413.GFF	11413.DFF	W/FULL FOAM	9.80	21.60						
11413.BGB	11413.GGB	11413.DGB	W/TACTICAL GUN BAG	10.30	22.70						
CERTIFICATIONS				INTERNAL DIM. (mm - in)				EXTERNAL DIM. (mm - in)			
IP67				L	W	D	Lid	Base	L	W	D
STANAG 4280 (ed. 2)				1136	350	135	42	93	1189	415	159
DEF STAN 81-41 (lev. J)				44.72	13.77	5.31	1.65	3.66	46.81	16.33	6.25



Automatic purge valve



Pull release latches and stainless steel padlockable points



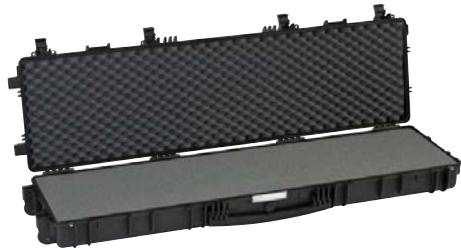
Wheels with bearings

MOD. 13513

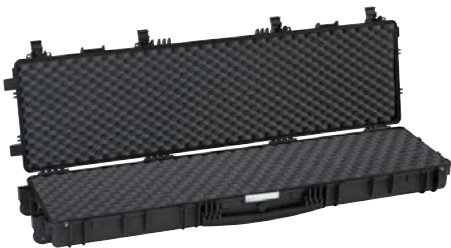
- Two men lift side handles and large front handle
- Optional shoulder strap available (Art. SHOULDERKIT.U)



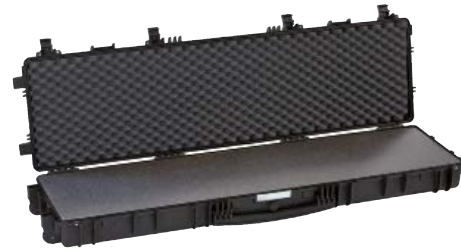
INTERNAL CONFIGURATIONS



pre-cubed foam



convoluted foam



high density full foam



tactical gun bag

AVAILABLE COLORS



BLACK MIL. GREEN SAND



Gun bag
Art. GBAG 135 (included)

CODES AND COLORS			INTERNAL CONFIGURATION	WEIGHT		VOLUME		BUOYANCY (max)		TEMP. RATING	
BLACK	MIL. GREEN	SAND		Kg	Lbs	Lt	Gal	Kg	Lbs	°C	°F
13513.BE	13513.GE	13513.DE	EMPTY	9.50	20.94	63.7	16.82	39.5	87.08	min. -33 max +90	min. -27.4 max +194
13513.B	13513.G	13513.D	W/PRE CUBED FOAM	10.80	23.81						
13513.BCV	13513.GCV	13513.DCV	W/CONVOLUTED FOAM	10.50	23.14						
13513.BFF	13513.GFF	13513.DFF	W/FULL FOAM	11.50	25.35						
13513.BGB	13513.GGB	13513.DGB	W/TACTICAL GUN BAG	11.80	26.01						
CERTIFICATIONS				INTERNAL DIM. (mm - in)				EXTERNAL DIM. (mm - in)			
IP67				L	W	D	Lid	Base	L	W	D
STANAG 4280 (ed. 2)				1350	350	135	42	93	1430	415	159
DEF STAN 81-41 (lev. J)				53.14	13.77	5.31	1.65	3.66	56.29	16.33	6.25

NSN available for most models on demand



MULTI GUN CASES



MOD. 9433

- Two men lift side handles and large front handle



INTERNAL CONFIGURATIONS



pre-cubed foam



CODES AND COLORS				INTERNAL	WEIGHT		VOLUME	BUOYANCY (max)		TEMP. RATING		
BLACK	MIL. GREEN	SAND	ORANGE	CONFIGURATION	Kg	Lbs	Lt	Gal	Kg	Lbs	°C	°F
9433.BE	9433.GE	9433.DE	9433.OE	EMPTY	10.2	22.48	108	28.53	84.9	187.17	min. -33	min. -27.4
9433.B	9433.G	9433.D	9433.O	W/PRE CUBED FOAM	12.7	27.99					max +90	max +194
CERTIFICATIONS					INTERNAL DIM. (mm - in)				EXTERNAL DIM. (mm - in)			
IP67 STANAG 4280 (ed. 2) DEF STAN 81-41 (lev. J)					L	W	D	Lid	Base	L	W	D
					936	350	330	42	288	1009	412	354
					36.85	13.77	12.99	1.65	11.33	39.72	16.22	13.93

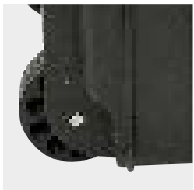
NSN available for most models on demand



Automatic purge valve



Pull release latches and stainless steel padlockable points



Large wheels with bearings



Shipping label holder

AVAILABLE COLORS



BLACK MIL. GREEN SAND ORANGE

DEEP GUN CASES



MOD. 13527

- Two men lift side handles and large front handle

INTERNAL CONFIGURATIONS



pre-cubed foam



high density full foam

AVAILABLE COLORS



BLACK

MIL. GREEN

SAND

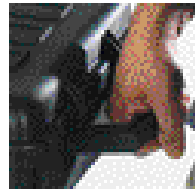
CODES AND COLORS			INTERNAL CONFIGURATION	WEIGHT		VOLUME		BUOYANCY (max)		TEMP. RATING	
BLACK	MIL. GREEN	SAND		Kg	Lbs	Lt	Gal	Kg	Lbs	°C	°F
13527.BE	13527.GE	13527.DE	EMPTY	12.90	28.44	128.5	33.94	97.5	214.95	min. -33 max +90	min. -27.4 max +194
13527.B	13527.G	13527.D	W/PRE CUBED FOAM	15.00	33.06						
13527.BFF	13527.GFF	13527.DFF	W/FULL FOAM	17.20	37.92						
CERTIFICATIONS				INTERNAL DIM. (mm - in)				EXTERNAL DIM. (mm - in)			
IP67				L	W	D	Lid	Base	L	W	D
STANAG 4280 (ed. 2)				1350	350	272	42	230	1430	415	296
DEF STAN 81-41 (lev. J)				53.14	13.77	10.70	1.65	9.05	56.29	16.33	11.65



Automatic purge valve



Pull release latches and stainless steel padlockable points



Two men lift side handles



3+3 wheels with bearings



THE LONGEST GUN CASES



AVAILABLE COLORS



BLACK

MIL. GREEN

SAND

MOD. 15416

- Side handles and large front handle
- Self-oiling free running wheels
- Double automatic purge valves

INTERNAL CONFIGURATIONS



pre-cubed foam



high density full foam



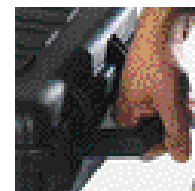
CODES AND COLORS			INTERNAL CONFIGURATION	WEIGHT		VOLUME		BUOYANCY (max)		TEMP. RATING	
BLACK	MIL. GREEN	SAND		Kg	Lbs	Lt	Gal	Kg	Lbs	°C	°F
15416.BE	15416.GE	15416.DE	EMPTY	11.50	25.35	92.9	24.54	61.6	135.80	min. -33 max +90	min. -27 max +19
15416.B	15416.G	15416.D	W/PRE CUBED FOAM	13.60	29.98						
15416.BFF	15416.GFF	15416.DFF	W/FULL FOAM	14.30	31.52						
CERTIFICATIONS				INTERNAL DIM. (mm - in)				EXTERNAL DIM. (mm - in)			
IP67				L	W	D	Lid	Base	L	W	D
STANAG 4280 (ed. 2)				1540	377	160	42	118	1629	456	183
DEF STAN 81-41 (lev. J)				60.62	14.84	6.29	1.65	4.64	64.13	17.95	7.20



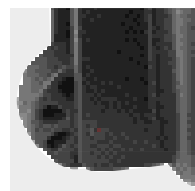
Wide pull release latches grant additional safety drop test proof



Double automatic purge valves



Two men lift side handles



Self-oiling free running wheels

NSN available for most models on demand



MULTI-WEAPONS
GUN CASES



MOD. 10826

All versions are able to accommodate most popular guns such as G36, MP5, M4, M16, AR 70/90.



Mod. 10826.B

- Pre-cubed foam
- Hinged lid
- Automatic purge valve



Mod. 10826.B D2

- Pre-shaped foam for 6 rifles and 12 mags
- Hinged lid
- Automatic purge valve



Pick & Pluck cubed foam



Plastic latches and reinforced padlockable points



Lockable metal bar to secure the guns



Metal latches and reinforced padlockable points



Mod. 10826.B D4

- Pre-shaped foam for 6 rifles and 12 mags
- Detachable lid
- Automatic purge valve



Metal latches and reinforced padlockable points



Lockable metal bar to secure the guns



Art. EX.METALPLATE Optional padlockable accessory to secure the open or closed case in vertical position to the wall. Fits all models.

AVAILABLE COLOR



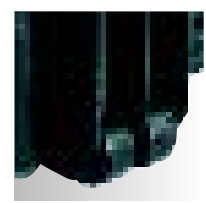
BLACK



Two men lift side handles. All models.



Automatic purge valve. All models.



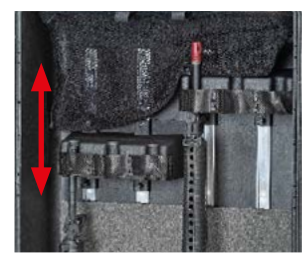
4 self-oiling free running wheels. All models.



Mod. 10826.B D5

- Adjustable barrel length for 6 rifles
- Detachable lid
- Automatic purge valve

Plastic molded rifle bedding and adjustable barrel rests, allow for 6 guns of various lengths to be stored with mounted optics. Metal lock bar is padlockable and removable.



Two adjustable barrel systems can be slid up and down independently to accommodate various barrel length. The large net pouch can secure magazines and accessories.



The metal bar can be detached and securely hooked to the in-built padlockable point of the case.

CODES AND COLORS		INTERNAL CONFIGURATION	WEIGHT		VOLUME		BUOYANCY (max)		TEMP. RATING	
BLACK	LID		Kg	Lbs	Lt	Gal	Kg	Lbs	°C	°F
10826.BE	HINGED LID	EMPTY	18.40	40.56	174	45.96	120.6	265.87	min. -33 max +90	min. -27.4 max +194
10826.B	HINGED LID	PRE CUBED FOAM	21.60	47.62						
10826.B D2	HINGED LID	FOAM x 6 RIFLES	20.01	44.11						
10826.B D4	DETACH. LID	FOAM x 6 RIFLES	19.70	43.43						
10826.B D5	DETACH. LID	ADJ BARREL RESTS x 6 RIFLES	21.80	48.06						
CERTIFICATIONS			INTERNAL DIM. (mm - in)				EXTERNAL DIM. (mm - in)			
IP67 - STANAG 4280 (ed. 2) - DEF STAN 81-41 (lev. J)			L	W	D	Lid	Base	L	W	D
10826			1080	620	260	60	200	1178	725	287
			42.51	24.40	10.23	2.36	7.87	46.37	28.54	11.29

NSN available for most models on demand



CUSTOM WEAPONS RACKING SYSTEM AVAILABLE ON REQUEST

MULTI-WEAPONS
GUN CASES



MOD. 10840

All versions are able to accommodate most popular guns such as G36, MP5, M4, M16, AR 70/90.



Mod. 10840.B

- Pre-cubed foam
- 50/50 split lid and base
- Automatic purge valve



Mod. 10840.B D1

- Pre-shaped foam for 6+6 rifles
- 50/50 split lid and base
- Humidity gauge



Pick & Pluck cubed foam



Padlockable points and heavy duty metal latches



Mod. 10840.B D2

- Pre-shaped foam for 6+6 rifles
- 50/50 split lid and base



Lockable metal bar to secure the guns



Metal latches and reinforced padlockable points



Art. EX.METALPLATE Optional padlockable accessory to secure the open or closed case in vertical position to the wall. Fits all models.

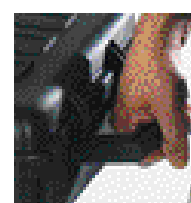
AVAILABLE COLORS



BLACK



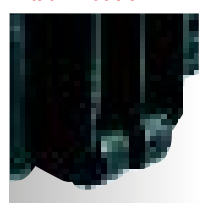
MILITARY GREEN



Two men lift side handles. All models.



Automatic purge valve. All models.



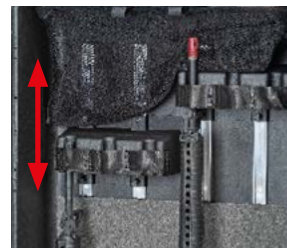
4 self-oiling free running wheels. All models.



Mod. 10840.B D5

- Adjustable barrel length for 6+6 rifles
- 50/50 split lid and base
- Automatic purge valve

Plastic molded rifle bedding and adjustable barrel rests, allow for 6+6 guns of various lengths to be stored with mounted optics. Metal lock bars are padlockable and removable.



Two adjustable barrel systems can be slid up and down independently to accommodate various barrel length. The large net pouch can secure magazines and accessories.



The metal bar can be detached and securely hooked to the in-built padlockable point of the case.

CODES AND COLORS			INTERNAL	WEIGHT		VOLUME		BUOYANCY		TEMP. RATING	
BLACK	MIL. GREEN	LID	CONFIGURATION	Kg	Lbs	Lt	Gal	Kg	Lbs	°C	°F
10840.BE	10840.GE	DETACH.	EMPTY	22.80	50.26	260	68.68	120.6	265.87	min. -33 max +90	min. -27.4 max +194
10840.B	10840.G	DETACH.	PRE CUBED FOAM	28.40	62.61						
10840.B D1	10840.G D1	DETACH.	FOAM x 6+6 RIFLES + HUM. GAUGE	25.70	56.65						
10840.B D2	10840.G D2	DETACH.	FOAM x 6+6 RIFLES	25.70	56.65						
10840.B D5	10840.G D5	DETACH.	ADJ BARREL RESTS x 6+6 RIFLES	29.90	65.91						
CERTIFICATIONS				INTERNAL DIM. (mm - in)				EXTERNAL DIM. (mm - in)			
IP67 - STANAG 4280 (ed. 2) - DEF STAN 81-41 (lev. J)				L	W	D	Lid	Base	L	W	D
10840				1080	620	400	200	200	1178	718	427
				42.51	24.40	15.74	7.87	7.87	46.37	28.26	16.81

NSN available for most models on demand

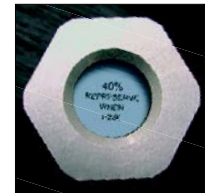


CUSTOM WEAPONS RACKING SYSTEM AVAILABLE ON REQUEST

Padlockable points and heavy duty metal latches



Humidity gauge



TACTICAL GUN BAGS



Heavy duty padded gunbags designed in different sizes to suit most different models of guns and accessories, for a safe protection and transportation.

Optional
Art. BACKPACK KIT
ALL GUNBAGS ARE FITTABLE
WITH A PRACTICAL SHOULDER
STRAP FOR BACKPACK USE



Shoulder strap always included
except for GBAG 30

- External padded zipped pouches for magazines and accessories
- Heavy duty padded fabric
- Neoprene Hook&Loop flaps
- Durable zippers with nylon pulls



GBAG 30
Fits case 3005
Ext. Dim. 300x210x40 mm.
11 13/16 x 8 1/4 x 1 9/16 in



GBAG 42
Fits case 4209HL
Ext. Dim. 410x300x95 mm.
16 1/8 x 11 13/16 x 3 3/4 in

Shoulder strap included



GBAG 44
Fits case 4412HL
Ext. Dim. 445x345x90 mm.
17 1/2 x 13 9/16 x 3 9/16 in

Shoulder strap included



GBAG 52
Fits cases 5212HL-15HL-21HL and 5326
Ext. Dim. 520x270x120 mm.
20 1/2 x 10 5/8 x 4 3/4 in

Shoulder strap included



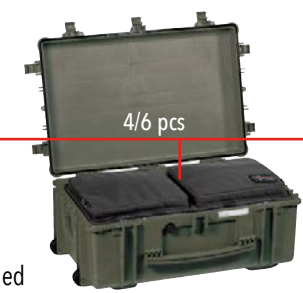
GBAG 58
Fits case 5833
Ext. Dim. 580x330x135 mm.
22 13/16 x 13 x 5 5/16 in

Shoulder strap included

GBAG 76



Shoulder strap included



4/6 pcs



6/8 pcs



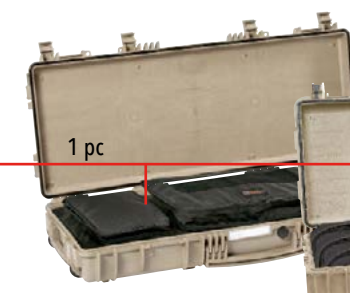
1 pc

GBAG 76
Fits cases 7630, 7641 and 7814
Ext. Dim. 765x352x135 mm.
30 1/8 x 13 7/8 x 5 5/16 in

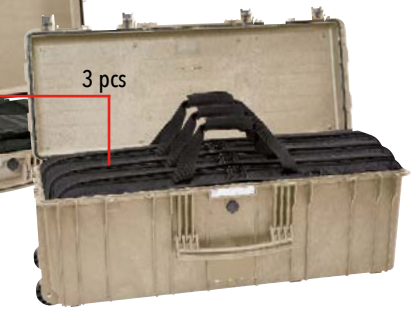
GBAG 94



Shoulder strap included



1 pc



3 pcs

GBAG 94
Fits cases 9413 and 9433
Ext. Dim. 939x352x135 mm.
36 15/16 x 13 7/8 x 5 5/16 in

GBAG 114



Shoulder strap included



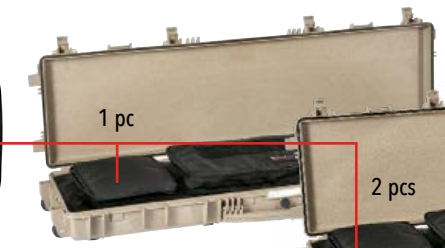
1 pc

GBAG 114
Fits case 11413
Ext. Dim. 1136x350x135 mm.
44 3/4 x 13 3/4 x 5 5/16 in

GBAG 135



Shoulder strap included



1 pc



2 pcs

GBAG 135
Fits cases 13513 and 13527
Ext. Dim. 1350x350x135 mm.
53 1/8 x 13 3/4 x 5 5/16 in

GBAG 108



Shoulder strap included



2/4 pcs



4/6 pcs

GBAG 108
Fits cases 10826 and 10840
Ext. Dim. 1080x400x135 mm.
42 1/2 x 15 3/4 x 5 5/16 in

CUSTOM SOLUTION ON REQUEST. MINIMUM QUANTITY APPLIES

PADDED
GUN BAGS



Tactical heavy duty padded fabric gunbag suitable for long gun or sniper rifles, magazines and accessories. The best weapon protection.

GBAG 154

Fits case mod. 15416.
Ext. Dim. 1540x365x70/160 mm.
60 5/8 x 14 13/16 x 2 3/4 - 6 5/16 in.

Fittable with the optional backpack system in the rear
(Art. BACKPACK KIT - see page 16)



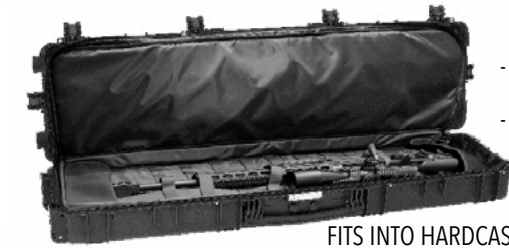
Shoulder strap included



Full-opening zipper for shooting mat configuration



External padded zipped pouches for magazines and accessories



- Neoprene Hook&Loop flaps
- Internal weapon securing straps

FITS INTO HARDCASE mod. 15416

GBAG 135. MARKS

Fits case mod. 13513 and 13527
Ext. Dim. 1350x350x135 mm.
53 1/8 x 13 3/4 x 5 5/16 in



High-performance tactical bag, specifically designed to meet the requirements of precision shooting applications. It is manufactured from high-strength Ripstop fabric, offering excellent tear resistance and durability for intensive operational use.

The interior features:

- Two large integrated protective panels, usable as a shooting mat
- Dedicated pockets for ammunition and accessory storage
- Adjustable shoulder straps, allowing the bag to be comfortably worn as a backpack

The internal layout is engineered to ensure optimal equipment protection, quick access, and maximum efficiency in the field.

FITS INTO HARDCASE mod. 13513

FITS INTO HARDCASE mod. 13527



GUN SLEEVES

Designed to protect your rifle and accessories, these new well-padded budget gun bags are lightweight and durable, provided with inner straps to keep your firearm properly secured.



GSLEEVE 78

Fits case 7814
Ext. Dim. 780x340x80 mm.
30 11/16 x 13 3/8 x 3 1/8 in.

GSLEEVE 94

Fits case 9413
Ext. Dim. 935x340x70 mm.
36 13/16 x 13 3/8 x 2 3/4 in.

GSLEEVE 114

Fits case 11413
Ext. Dim. 1135x340x70 mm.
44 11/16 x 13 3/8 x 2 3/4 in.

GSLEEVE 135

Fits case 13513
Ext. Dim. 1345x340x70 mm.
52 15/16 x 13 3/8 x 2 3/4 in.

MULTI-UTILITY BOX



WATER RESISTANT

- Moulded high impact polypropylene
- Moulded integral lifting points on both ends
- Full length steel hinge pin to lid
- Positive grab over latching catches
- Use in high/low temp environments
- Slide out clear ID Nameplate holder
- Large fold flat carry handle
- Padlocking provision
- Stacking location points

MUB78

- Empty
- Trolley case integral wheels and hinge out pull handle

Art. KIT TRAY MUB - Optional tray with removable divider for tools, instruments or spare parts. MUB78 can fit up to two trays. Elasticated bands for the tray also available (art. KIT03).



MUB65

- Empty



AVAILABLE COLOR



BLACK

CODES AND COLORS		INTERNAL		WEIGHT		VOLUME		BUOYANCY (max)			
BLACK		CONFIGURATION		Kg	Lbs	Lt	Gal	Kg	Lbs		
MUB65		EMPTY		4.40	9.70	61.5	16.24	42.7	94.13		
MUB78		EMPTY		6.30	13.88	89	23.51	80.5	177.47		
				INTERNAL DIM. (mm - in)				EXTERNAL DIM. (mm - in)			
				L	W	D	Lid	Base	L	W	D
MUB65				653	340	312	65	247	678	404	331
				25.70	13.38	12.28	2.56	9.72	26.68	15.90	13.03
MUB78				780	410	330	50	280	807	470	345
				30.70	16.14	12.99	1.96	11.02	31.77	18.50	13.58

ARMORERS CASES



5140

The armorers case is the ideal toolbox for your workshop, quickly configurable for transport with a Military grade telescopic handle and 4 rubber wheels. Ruggedized and waterproof, grants proper protection to all tools and accessories carried within.

Comes with a internal upper removable tray that sits firmly into the box or can be pulled out for remote operations (retrofittable with the optional EXPLORER RIFLE REST KIT).

The 5 provided drawers ensure proper and secure transportation of all tools and parts are available with or without pluckable bi-color foam, when pulled out give full access to their content and can be completely removed by pressing the two side red tabs.

RIFLE REST KIT (optional)

Quickly convert the upper tray of the armorers case into a rifle rest. The two foldable cradles connect to the tray to create a secure and firm support for any rifle to perform fine tuning and cleaning in a practical and handy way. Design of the cradles is done to make sure the rifle sits horizontal.



5140.B.2A3L

empty drawers

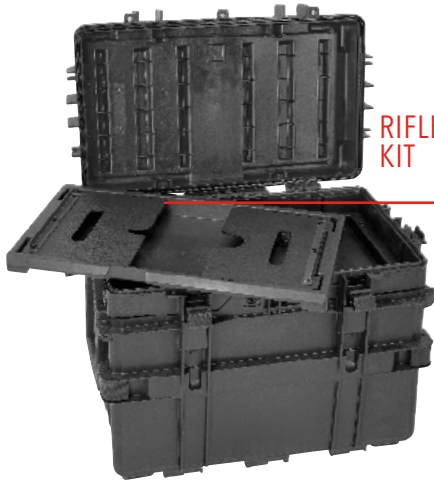
2 x AIDRAW3.E (H30 mm - 1.2 in)
3 x AIDRAW6.E (H60 mm - 2.4 in)



5140.B.2C3M

drawers with foam

2 x AIDRAW3.F (H30 mm - 1.2 in)
3 x AIDRAW6.F (H60 mm - 2.4 in)



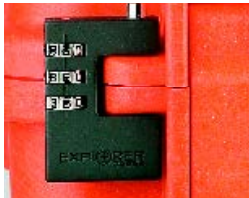
RIFLE REST KIT



OPTIONAL ACCESSORIES



PATENTED HEAVY DUTY
BRASS PADLOCK
(Art. EXPL PADLOCK)



PATENTED COMBINATION
PADLOCK
(Art. EXPL COMBILOCK)



TSA LOCK™ COMBI
PADLOCK
(Art. EXPL TSA.DIGILOCK)



3-DIGITS LOCKS - ON
DEMAND
(CASE CODE + DL)

Models:

9413	13527
9433	15416
11413	10826
13513	10840



REG. N. 1594-A
UNI EN ISO 9001:2015