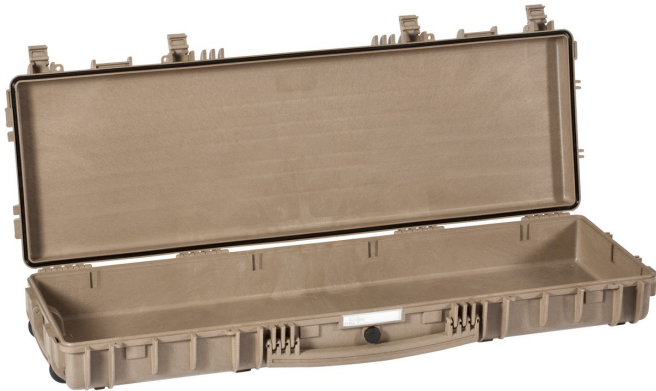
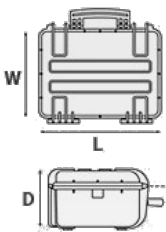


# Mod. 11413 DE

□□□□□□□□

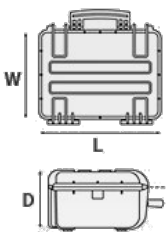


## Metric mm-Kg-C°



□□□□	□□□□	□□□□	□□□□
<b>L</b> □□	<b>1136 mm</b>	<b>L</b> □□	<b>1189 mm</b>
<b>W</b> □□	<b>350 mm</b>	<b>W</b> □□	<b>415 mm</b>
<b>D</b> □□	<b>135 mm</b>	<b>D</b> □□	<b>159 mm</b>
□	<b>42 mm</b>	□□□□□□	<b>0 Kg</b>
□□□	<b>93 mm</b>	□□	<b>53.70 lt</b>
		□□	<b>33.30 Kg/max</b>
		□□□□	<b>°C min -33 / max +90</b>

## Imperial in-lbs-F°



□□□□	□□□□	□□□□	□□□□
<b>L</b> □□	<b>44 3/4 in</b>	<b>L</b> □□	<b>46 13/16 in</b>
<b>W</b> □□	<b>13 3/4 in</b>	<b>W</b> □□	<b>16 5/16 in</b>
<b>D</b> □□	<b>5 5/16 in</b>	<b>D</b> □□	<b>6 1/4 in</b>
□	<b>1 5/8 in</b>	□□□□□□	<b>0 lbs</b>
□□□	<b>3 11/16 in</b>	□□	<b>14.18 gal</b>
		□□	<b>73.41 lbs/max</b>
		□□□□	<b>°F min -27.4 / max +194</b>





### TSA

TSA; ; TSA



### 11413



GBAG 114

### 11413

GBAG 114 ExplorerCases 11413 600D ID BACKPACK KIT

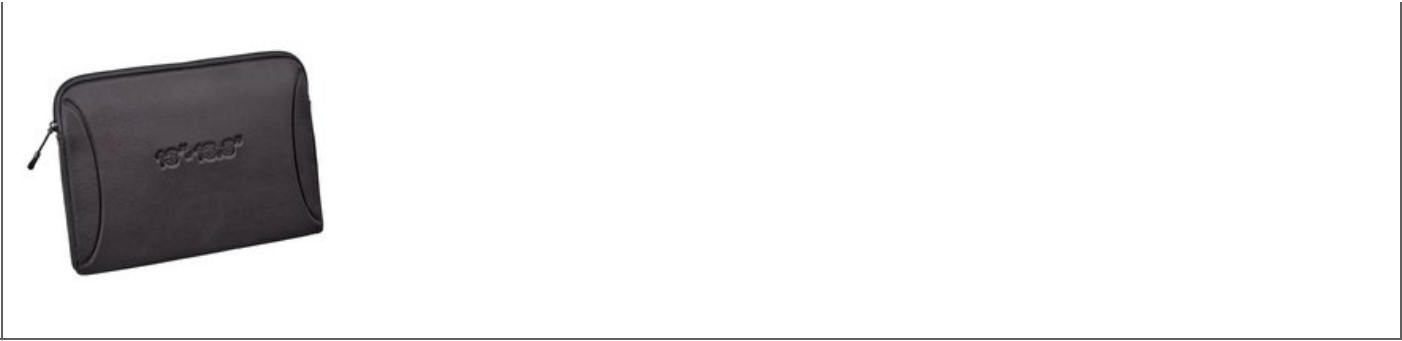


### 11413

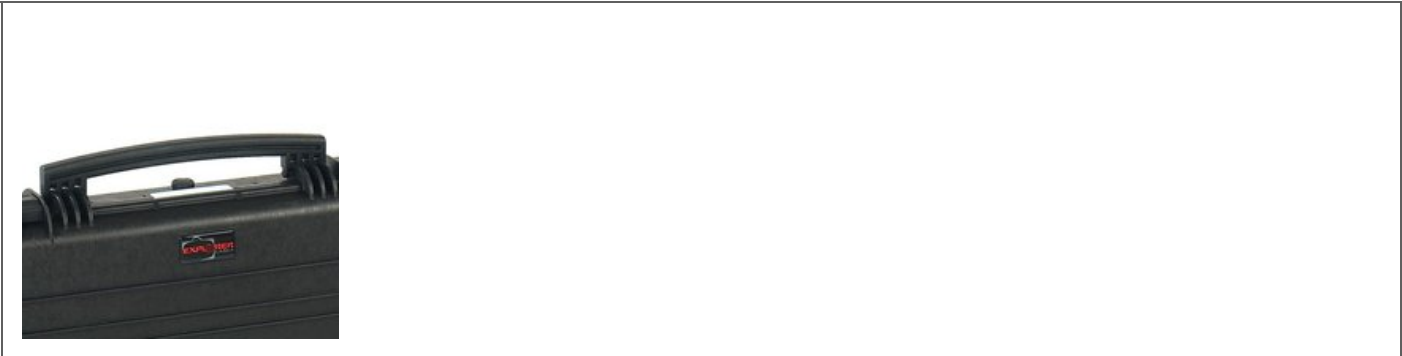
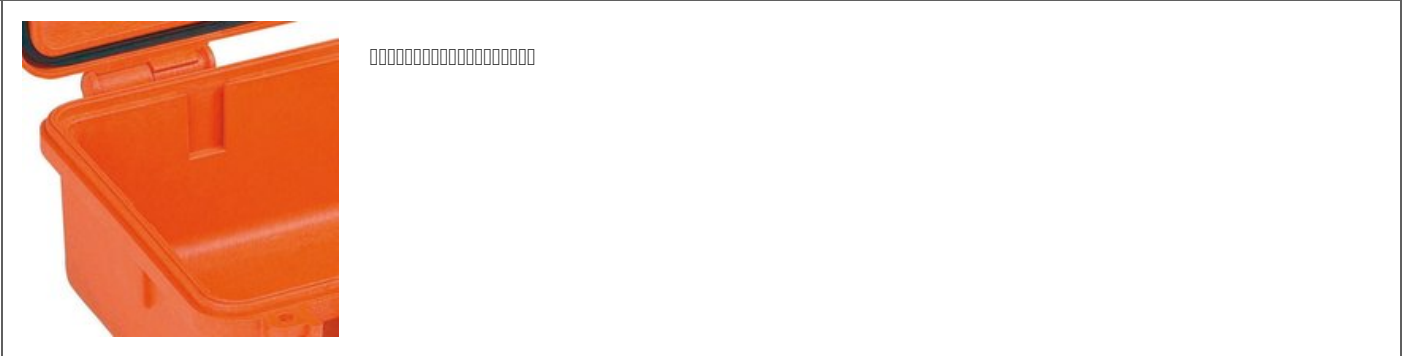
GSleeve 600D







□□





003818



(Art. NEOSEAL + nr. art.)



0000000000000000ArtPURGEVALVE.B



(Art. LABELCOVER + nr. art.)



(art. SHOULDERKIT.U)

