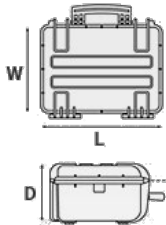


# Mod. 5823 BPH

WATERPROOF CASE WITH PADDED DIVIDERS



Metric mm-Kg-C°



## INTERNAL DIMENSIONS

L Length	580 mm
W Width	440 mm
D Depth	220 mm
Lid	60 mm
Base	160 mm

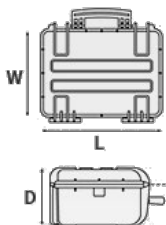
## EXTERNAL DIMENSIONS

L Length	670 mm
W Width	510 mm
D Depth	262 mm

## OTHER DATA

Weight empty	9,17 Kg
Weight with foam	10,40 Kg
Weight with custom foam	Kg
Volume	56 lt
Buoyancy	36,70 Kg/max
Operating temperature	°C min +90 / max -33

Imperial in-lbs-F°



## INTERNAL DIMENSIONS

L Length	22 13/16 in
W Width	17 5/16 in
D Depth	8 11/16 in
Lid	2 3/8 in
Base	6 5/16 in

## EXTERNAL DIMENSIONS

L Length	26 3/8 in
W Width	20 1/16 in
D Depth	10 5/16 in

## OTHER DATA

Weight empty	20.21 lbs
Weight with foam	22.92 lbs
Weight with custom foam	lbs
Volume	14.79 gal
Buoyancy	80.90 lbs/max
Operating temperature	°F min +194 / max -27.4

# Mod. 5823 BPH

## ACCESSORIES



### **PADDED BAG WITH ADJUSTABLE DIVIDERS**

Highly durable padded bag with rubber coated handle and robust zipper with lockable Velcro pull zipper. Practical external front pouch for documents, removable shoulder strap and rubber feet on the bottom to grant better grip.

Internal adjustable padded dividers for flexible configuration.

Ideal to protect sensitive equipment (ie electronic, photographic, broadcasting, medical etc.).

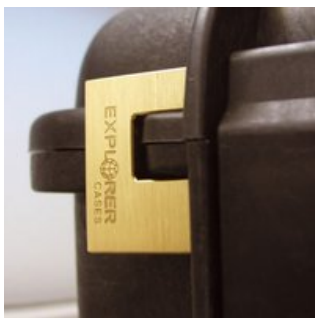
Suitable for cases 5822, 5823 and 5833.

Color: black.



### **PATENTED COMBINATION PADLOCK**

Designed to fit snug to the Explorer case mould so as not to swing out



### **PATENTED HEAVY DUTY BRASS PADLOCK WITH KEYS**

Designed to fit snug to the Explorer case mould so as not to swing out



### **TSA APPROVED PADLOCK WITH COMBINATION**

The new TSA approved padlocks allow tsa® airport security agents to open the case without destroying the lock. TSA agents are trained to recognize the travel sentry certified logo and should not break the case lock.

### FOAM SET FOR CASE 5822 AND 5823

Layers of pre cubed foam for the bottom and convoluted foam for the lid



### BLIND INSERT

Kit includes 6 pcs.

Whenever the slots are not going to be used for in-built applications, those can be closed by blind inserts that will give the case a better and finished interior look.



### METAL BRACKET

Kit includes 6 pcs.

All models (except for the 1908) are internally equipped with specific slots, to apply the optional metal or plastic brackets which provide either a panel's fixing points or a fix mechanical joint inside the case, to build more complete applications. This way the case becomes a real workstation, rather than just a carrying container. As the panel mounting brackets are mechanically fixed by screws, they can be removed when necessary. The dedicated screws allow the case to remain waterproof, and help the panels to be removed easily and quickly





### **PLASTIC BRACKET**

Kit includes 6 pcs.

All models (except for the 1908) are internally equipped with specific slots, to apply the optional metal or plastic brackets which provide either a panel's fixing points or a fix mechanical joint inside the case, to build more complete applications. This way the case becomes a real workstation, rather than just a carrying container. As the panel mounting brackets are mechanically fixed by screws, they can be removed when necessary. The dedicated screws allow the case to remain waterproof, and help the panels to be removed easily and quickly



### **CONVOLUTED FOAM SET FOR CASE 5822, 5823 AND 5833**

(includes 2 pcs.)



### **LID PANEL WITH ORGANIZED POUCHES**

Practical and robust lid panel with pouches, ideal for small accessories and documents. Suitable for cases 5822, 5823 and 5833.

Color: black.



### **PROTECTIVE SLEEVE FOR PC 13"-13.3"**

Protective padded notebook sleeve. Protects the laptop from shocks and scratches.



### **TRIPOD BAG**

Padded tripod bag in tear resistant fabric. Adjustable shoulder strap and frontal pouch for accessories. Ideal to protect and transport professional tripods for cameras and video cameras.



**OPTIONAL  
TOP COVERS  
AVAILABLE  
FOR LARGER  
MODELS**

**COPERCHI  
OPZIONALI  
PER I  
MODELLI  
PIU' GRANDI**

### **TOP COVER FOR DIV58-DIV58.1 AND DIV58.2**

Top covers available for larger models: they can be easily fixed on the dividers by Velcro strips. Ideal to protect and keep items in place.



### **PADDED DIVIDER FOR 5822-5823-5833**

Padded dividers with internal adjustable partitions. Ideal to protect and transport any kind of sensitive equipment. Thanks to their modularity, they can be easily combined.

## **FEATURES**





Internal slots for optional panel mounting brackets or panel mounting rings



(from model 3818 on)



The internal stop ring prevents valve from being completely extracted (Art. PURGEVALVE.B)



(Art. LABELCOVER + nr. art.)

(Art. NEOSEAL + nr. art.)



Asa de carga comprobada, reforzada con pasadores de acero a prueba de corrosión



